

# 手持式激光焊接机/自动送丝/金属激光焊接

Handheld laser welding machine / Automatic wire feeding / Metal laser welding

MT-SC6  
功率/配置/其他参数 (均非标定制)



\*以实物为准 Subject to the real object \*更多详情官网 [www.mtislaser.com](http://www.mtislaser.com)

机型 Model	MT-SC6
最大激光功率 (W) Maximum laser power	1000   1500   2000   3000
整机功率 (KW) Overall power	6   8   12   15
光纤长度 (M) Fiber length	10/15
供电电源 Power supply	220VAC或380VAC
冷却方式 Cooling mode	水冷 water-cooling
使用环境 Application scenario	温度10℃~30℃   湿度5%~85% Temperature 10℃~30℃   Humidity 5%~85%
激光波长 (nm) Laser wavelength	1080±5
功率调节范围 Power regulation range	10-100%
适用材质 Applicable materials	不锈钢、铝合金、铁、铜、碳钢等 Stainless steel, aluminum alloy, iron, copper, carbon steel, etc

比传统焊接技术，激光焊接机不需要大量的焊接材料，降低了技术成本；

Compared to traditional welding techniques, laser welding machines require less welding material, reducing technical costs;

激光焊接技术焊接时热量集中，热影响区域小，减少了变形和氧化的可能性，焊接后工件表面光滑，不发黑，保持原有外观；

Laser welding technology concentrates heat during welding, resulting in a small heat-affected zone, reducing the likelihood of deformation and oxidation. The surface of the workpiece remains smooth and does not darken, maintaining its original appearance;

配备自动送丝功能，焊接过程中无需频繁更换焊丝，大幅提高了焊接效率，减少了生产时间；

Equipped with automatic wire feeding function, there is no need to frequently change welding wire during the welding process, greatly improving welding efficiency and reducing production time;



# 手持式激光焊接机/自动送丝/金属激光焊接

Handheld laser welding machine / Automatic wire feeding / Metal laser welding

MT-SC5

功率/配置/其他参数 (均非标定制)

\*以实物为准 Subject to the real object \*更多详情官网 [www.mtslaser.com](http://www.mtslaser.com)



机型 Model	MT-SC5
最大激光功率 (W) Maximum laser power	1000   1500   2000   3000
整机功率 (KW) Overall power	6   8   12   15
光纤长度 (M) Fiber length	10/15
供电电源 Power supply	220VAC或380VAC
冷却方式 Cooling mode	水冷 water-cooling
使用环境 Application scenario	温度10℃~30℃   湿度5%~85% Temperature 10℃~30℃   Humidity 5%~85%
激光波长 (nm) Laser wavelength	1080±5
功率调节范围 Power regulation range	10-100%
适用材质 Applicable materials	不锈钢、铝合金、铁、铜、碳钢等 Stainless steel, aluminum alloy, iron, copper, carbon steel, etc

激光焊接机焊接出的焊缝平整、美观，无需进行二次打磨，节省了人工和时间成本；

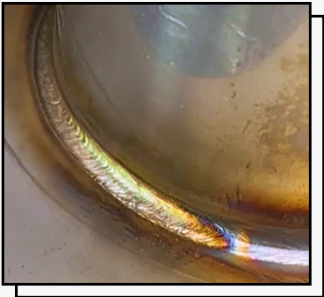
The weld seam welded by the laser welding machine is smooth and aesthetically pleasing, without the need for secondary grinding, saving labor and time costs;

焊接过程中，焊缝色泽白皙，无需额外处理，无焊渣、气孔等缺陷，保证焊接质量；

During the welding process, the weld bead exhibits a pale hue, requiring no additional treatment, free from weld spatter, porosity, or any defects, ensuring welding quality;

激光焊接机只需接通电源即可使用，无需特殊气源或其他设备，方便快捷；

Plug in and use with only power supply, no need for special gas source or other equipment, convenient and fast;



# 手持式激光焊接机/自动送丝/小型/风冷式

Handheld laser welding machine / automatic wire feeding / compact / air-cooled

MT-SC4  
功率/配置/其他参数 (均非标定制)



\*以实物为准 Subject to the real object \*更多详情官网 [www.mtislaser.com](http://www.mtislaser.com)

机型 Model	MT-SC4
最大激光功率 (W) Maximum laser power	1000   1500
整机功率 (KW) Overall power	6   8   12   15
光纤长度 (M) Fiber length	10/15
供电电源 Power supply	220VAC或380VAC
冷却方式 Cooling mode	风冷 air-cooled
使用环境 Application scenario	温度10℃~30℃   湿度5%~85% Temperature 10℃~30℃   Humidity 5%~85%
激光波长 (nm) Laser wavelength	1080±5
功率调节范围 Power regulation range	10-100%
适用材质 Applicable materials	不锈钢、铝合金、铁、铜、碳钢等 Stainless steel, aluminum alloy, iron, copper, carbon steel, etc

采用风冷式设计，不需要水冷系统，简化了设备结构，提高了稳定性；

Adopting an air-cooled design eliminates the need for a water cooling system, simplifying the equipment structure and enhancing stability;

能够对任意金属材质进行焊接，具有广泛的适用性；

Can weld any metal material with wide applicability;

配备自动送丝功能，提高了焊接效率，减少了操作者的工作负担；

Equipped with automatic wire feeding function, improving welding efficiency and reducing operator's workload;











