



平台式/多轴自动化 激光焊接专机/非标

Platform/Multi-axis Automated Laser Welding Special Machine

工业PC机控制，平面X、Y、Z轴伺服电机驱动， $\pm 45^\circ$ Z、X平面倾斜姿势可调，可焊接点、直线、圆、方形或由直线圆弧组成的任意平面图形；可选配俯仰R轴（步进或伺服）。实现工作台任意四轴联动、五轴联动、六轴联动、八轴联动等，完成空间任意轨迹的焊接。

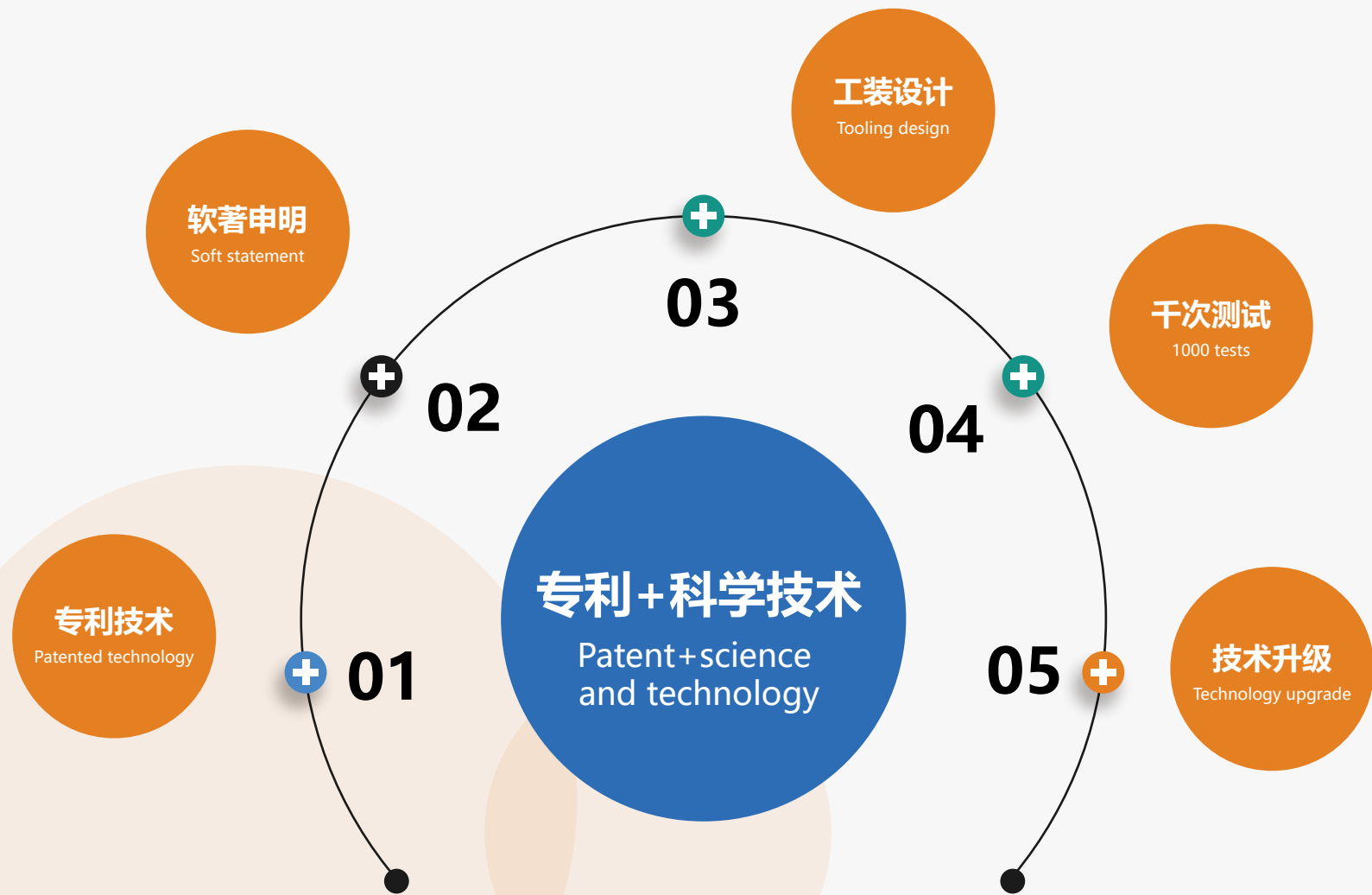
Industrial PC control, plane X, Y, Z axis servo motor drive, $\pm 45^\circ$ Z, X plane tilt position manually adjustable, welding point, straight line, circle, square or any plane figure composed of straight arc; Optional pitch R axis (step or servo). Realize any four-axis linkage, five-axis linkage, six-axis linkage and eight-axis linkage of the workbench, and complete the welding of any space track.

高附加值产品不断满足客户个性化市场需求

High-value-added products continuously meet customers' personalized market demands

铭泰激光是一家注重品质的企业。我们始终坚持以客户为中心，以质量为生命的理念，不断提升产品品质和服务水平，赢得了客户的信任和支持。我们的激光焊接设备已经成为了众多知名企业的的首选品牌，并在国内外市场上获得了广泛的认可。我们的品牌价值在不断增强，我们将继续努力，让更多的客户受益于我们的激光焊接技术和服务。

Mingtai Laser is an enterprise focusing on quality. We have always adhered to the concept of customer-centered and quality-based life, constantly improved product quality and service level, and won the trust and support of customers. Our laser welding equipment has become the preferred brand of many well-known enterprises and has been widely recognized in the domestic and foreign markets. Our brand value is constantly increasing. We will continue to work hard to make more customers benefit from our laser welding technology and services.



专利+科学技术，荣获年度激光行业激光智能装备技术创新奖，社会主义先行示范区装备工业科技创新奖。

Patent+science and technology, won the 2022 laser intelligent equipment technology innovation award in the laser industry, and the equipment industry technology innovation award in the socialist leading demonstration zone.

龙门轴/激光自动焊机/锂电池/动力电池焊接专机

Gantry Axis/Laser Automatic Welding Machine/Lithium Battery/Power Battery Welding Special Machine

MT-ZDSB43

功率/配置/其他参数 (均非标定制)



*以实物为准 Subject to the real object

*更多详情官网 www.mtislaser.com

01

激光焊接设备
LASER WELDING EQUIPMENT

龙门架结构使得设备运动更为稳定，提高焊接的精度和稳定性，大幅面行程工作焊接范围，适用于不同尺寸和形状的电池组；

The gantry structure makes the equipment movement more stable, improving the precision and stability of welding, with a large working range for welding, suitable for batteries of different sizes and shapes;

优质的光束质量有助于获得高质量的焊接效果，减少焊接缺陷，高效的光电转化率确保激光能源得到有效利用；

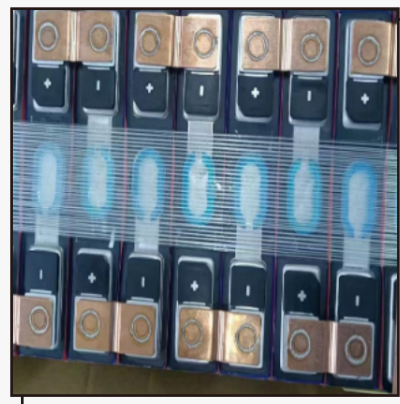
High-quality beam characteristics contribute to achieving high-quality welding results, reducing welding defects, and the efficient photoelectric conversion rate ensures the effective utilization of laser energy;

自动顶压焊接装置可以更好地固定工件，提高焊接精度。降低了对复杂工装的依赖，简化了生产流程，减少了成本；

The automatic top pressure welding device can better secure the workpiece, improving welding accuracy. It reduces dependence on complex fixtures, simplifies the production process, and lowers costs;

能够方便地集成到PACK产线，实现与其他生产环节的高效对接，提高了整体生产线的协同工作效率；

Easily integrate into the PACK production line, achieve efficient connection with other production processes, and enhance the overall production line's collaborative efficiency;



MT-ZDSB43

机型 Model	MT-ZDSB43
激光功率 (W) Laser power	1500 2000 3000 4000 5000 6000
功率可调范围 (%) Power regulation range	10-100%
光纤芯径 (μm) Fiber core diameter	20μm 50μm 100μm (视应用要求选配) Optional according to application requirements
工作温度 (°C) Operation temperature	10°C~35°C
冷却方式 Cooling mode	水冷 Water-cooling
工作模式 Working mode	连续或调试 Continuous or commissioning
定位系统 Position system	红光CCD Red light CCD
电力需求 Power demand	380VAC±10%/3P+N+PE