

多轴平台激光自动焊机/锁体面板焊接专机

Multi-axis platform laser automatic welding machine / Lock body panel welding special machine

MT-ZDSB60

功率/配置/其他参数 (均非标定制)

*以实物为准 Subject to the real object *更多详情官网 www.mtslaser.com



机型 Model	MT-ZDSB60
激光功率 (W) Laser power	1500 2000 3000 4000 6000 8000
激光波长 (nm) Laser wavelength	1080±5
功率可调范围 (%) Power regulation range	10~100%
光纤芯径 (μm) Fiber core diameter	20μm 50μm 100μm (视应用要求选配) As per application requirements
冷却方式 Cooling mode	水冷 water-cooling
工作模式 Working mode	连续或调试 Continuous or commissioning
工作温度 (°C) Operation temperature	10°C~35°C
电力需求 Power demand	220V/380V
焊接定位 Welding positioning	红光CCD Red light CCD

01

激光焊接设备
LASER WELDING EQUIPMENT

专门为锁体面板而设计，充分考虑了锁体焊接的特殊需求，确保焊接效果和质量；

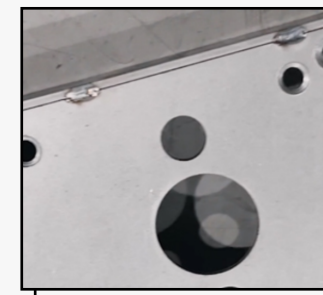
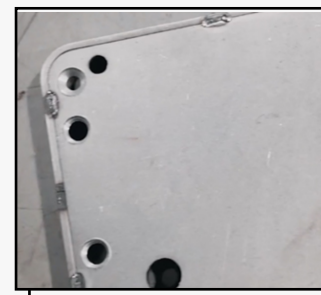
Specially designed for lock body panels, fully considering the special requirements of lock body welding, ensuring welding effectiveness and quality;

能够显著提升生产效率，保证焊接质量，降低了人工成本和废品率，是锁体面板自动化焊接的理想解决方案；

This solution significantly enhances production efficiency, ensures welding quality, and reduces labor costs and scrap rates, making it the ideal solution for automated welding of lock body panels;

采用激光技术进行焊接，完全摆脱传统焊接中的接触方式，避免了材料表面损伤和变形，确保焊接品质；

Utilizing laser technology for welding, it completely eliminates the contact method typical of traditional welding, thus avoiding material surface damage and deformation, ensuring welding quality;



多轴平台激光自动焊机/液压油缸焊接专机

Multi-axis platform laser automatic welding machine / Hydraulic cylinder welding special machine

MT-ZDSB61

功率/配置/其他参数 (均非标定制)



*以实物为准 Subject to the real object *更多详情官网 www.mtslaser.com

机型 Model	MT-ZDSB61
激光功率 (W) Laser power	1500 2000 3000 4000 6000 8000
激光波长 (nm) Laser wavelength	1080±5
功率可调范围 (%) Power regulation range	10~100%
光纤芯径 (μm) Fiber core diameter	20μm 50μm 100μm (视应用要求选配) As per application requirements
冷却方式 Cooling mode	水冷 water-cooling
工作模式 Working mode	连续或调试 Continuous or commissioning
工作温度 (°C) Operation temperature	10°C~35°C
电力需求 Power demand	220V/380V
焊接定位 Welding positioning	红光CCD Red light CCD

采用专业的PC机电脑编程控制技术, 操作简便, 轻松实现焊接轨迹的精准控制和管理, 大大提高了生产效率和产品质量;

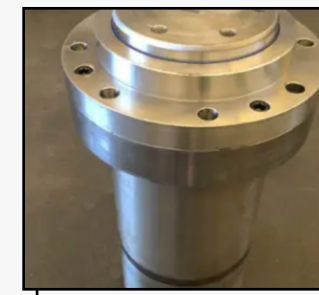
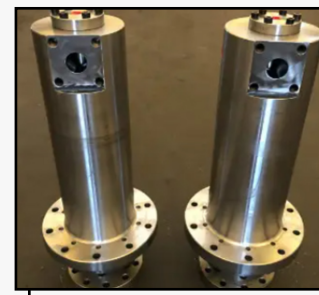
Utilizing professional PC-based programming and control technology, the operation is simple, enabling precise control and management of welding trajectories, significantly enhancing production efficiency and product quality;

焊接完成后, 焊缝清晰、美观且牢固, 无需额外的后期打磨, 节省了人力和时间成本;

After welding, the weld is clear, beautiful, and sturdy, without the need for additional post-weld grinding, saving manpower and time costs;

设备专门为液压油缸的自动化焊接而打造, 充分考虑了液压油缸的特殊焊接需求和工艺要求;

The equipment is specially designed for the automated welding of hydraulic cylinders, fully considering the special welding requirements and process demands of hydraulic cylinders;



多轴平台激光自动焊机/暖气片焊接专机

Multi-axis platform laser automatic welding machine / Special machine for radiator welding

MT-ZDSB59

功率/配置/其他参数 (均非标定制)



*以实物为准 Subject to the real object *更多详情官网 www.mt laser.com

机型 Model	MT-ZDSB59
激光功率 (W) Laser power	1500 2000 3000 4000 6000 8000
激光波长 (nm) Laser wavelength	1080±5
功率可调范围 (%) Power regulation range	10~100%
光纤芯径 (μm) Fiber core diameter	20μm 50μm 100μm (视应用要求选配) As per application requirements
冷却方式 Cooling mode	水冷 water-cooling
工作模式 Working mode	连续或调试 Continuous or commissioning
工作温度 (°C) Operation temperature	10°C~35°C
电力需求 Power demand	220V/380V
焊接定位 Welding positioning	红光CCD Red light CCD

03

激光焊接设备
LASER WELDING EQUIPMENT

采用先进的伺服电机技术，可根据需要调节焊接轨迹，满足不同暖气片的焊接要求；

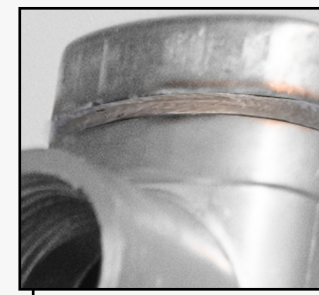
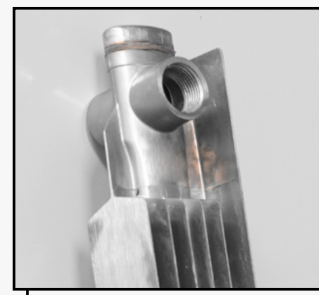
Adopting advanced servo motor technology, the welding trajectory can be adjusted as needed to meet the welding requirements of different radiators;

设备配备了精密的工装夹具，专为暖气片的形状和尺寸设计，确保焊接过程中暖气片的稳定固定，提高了焊接的精度和一致性。

The equipment is equipped with precision fixtures designed specifically for the shape and size of the radiator fins, ensuring stable fixation of the fins during the welding process.

智能化控制系统，能够实时监测和调整焊接参数，提高了生产过程的自动化程度和生产效率，降低了人为操作的误差风险。

Intelligent control system, capable of real-time monitoring and adjusting welding parameters, enhances the level of automation and production efficiency, reducing the risk of human error in operations

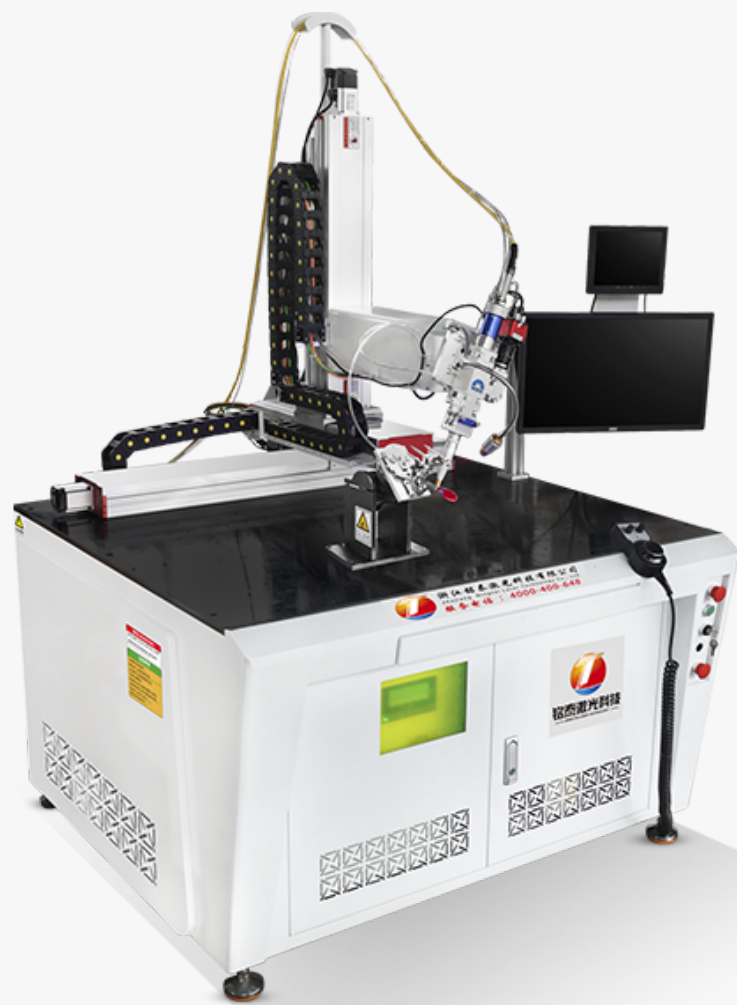


多轴平台激光自动焊机/眼镜框架焊接专机

Multi-axis platform laser automatic welding machine / Special machine for welding eyeglass frames

MT-ZDSB57

功率/配置/其他参数 (均非标定制)



*以实物为准 Subject to the real object *更多详情官网 www.mtslaser.com

机型 Model	MT-ZDSB57
激光功率 (W) Laser power	1500 2000 3000 4000 6000 8000
激光波长 (nm) Laser wavelength	1080±5
功率可调范围 (%) Power regulation range	10~100%
光纤芯径 (μm) Fiber core diameter	20μm 50μm 100μm (视应用要求选配) As per application requirements
冷却方式 Cooling mode	水冷 water-cooling
工作模式 Working mode	连续或调试 Continuous or commissioning
工作温度 (°C) Operation temperature	10°C~35°C
电力需求 Power demand	220V/380V
焊接定位 Welding positioning	红光CCD Red light CCD

针对眼镜框架这种精密件的特性，激光焊接技术能够提供高精度的焊接，确保每一处焊接点的质量和稳定性，满足高标准品质要求；

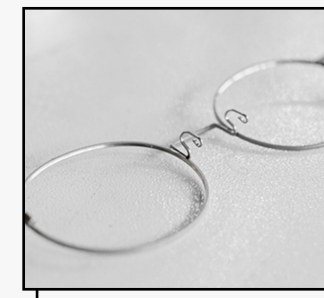
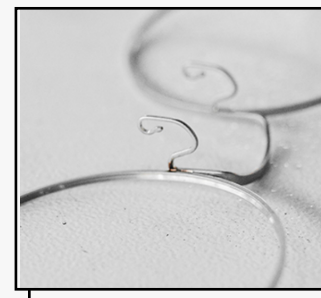
For precision components like eyeglass frames, laser welding technology delivers high-precision welding, ensuring the quality and stability of every weld point, meeting stringent quality standards;

24小时不间断的焊接能力，保证生产效率的最大化，确保生产线的持续运转；

24-hour uninterrupted welding capability ensures maximum production efficiency and continuous operation of the production line;

电脑编程控制，实现多重工序的焊接需求，满足不同眼镜框架的个性化要求；

Computer programming control, realizing multi-process welding requirements, meeting the personalized needs of different eyeglass frames;



多轴平台激光自动焊机/定子焊接专机

Multi-axis platform laser automatic welding machine / stator welding special machine

MT-ZDSB52

功率/配置/其他参数 (均非标定制)

*以实物为准 Subject to the real object *更多详情官网 www.mtislaser.com



机型 Model	MT-ZDSB52
激光功率 (W) Laser power	1500 2000 3000 4000 6000 8000
激光波长 (nm) Laser wavelength	1080±5
功率可调范围 (%) Power regulation range	10~100%
光纤芯径 (μm) Fiber core diameter	20μm 50μm 100μm (视应用要求选配) As per application requirements
冷却方式 Cooling mode	水冷 water-cooling
工作模式 Working mode	连续或调试 Continuous or commissioning
工作温度 (°C) Operation temperature	10°C~35°C
电力需求 Power demand	220V/380V
焊接定位 Welding positioning	红光CCD Red light CCD

05

激光焊接设备
LASER WELDING EQUIPMENT

此设备专为新能源汽车电机定子的自动化焊接而设计，完美契合行业需求；

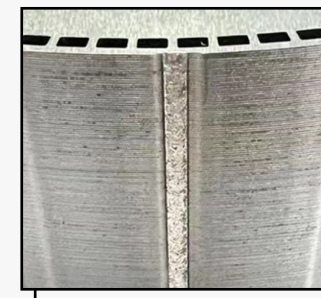
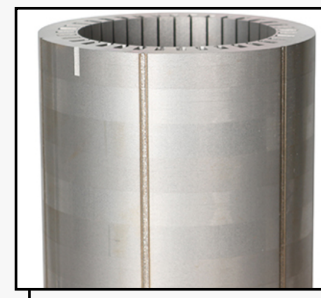
This equipment is specially designed for the automated welding of stators for new energy vehicle motors, perfectly meeting industry demands;

激光焊接技术确保焊缝清晰美观，适用于焊接精密件，提供高精度的焊接质量，为新能源动力电机的生产提供可靠保障；

Laser welding technology ensures clear and aesthetically pleasing weld seams, suitable for welding precision components, providing high-precision welding quality, and offering reliable assurance for the production of new energy power motors;

采用激光技术进行焊接，避免了传统焊接中可能出现的接触损伤和变形问题，确保焊接质量稳定；

Using laser technology for welding, it avoids potential contact damage and deformation issues commonly encountered in traditional welding, ensuring stable welding quality;



多轴平台激光自动焊机/卫浴管焊接专机

Multi-axis platform laser automatic welding machine/special machine for bathroom tube welding

MT-ZDSB05

功率/配置/其他参数 (均非标定制)

*以实物为准 Subject to the real object *更多详情官网 www.mtslaser.com



机型 Model	MT-ZDSB05
激光功率 (W) Laser power	1500 2000 3000 4000 6000 8000
激光波长 (nm) Laser wavelength	1080±5
功率可调范围 (%) Power regulation range	10~100%
光纤芯径 (μm) Fiber core diameter	20μm 50μm 100μm (视应用要求选配) As per application requirements
冷却方式 Cooling mode	水冷 water-cooling
工作模式 Working mode	连续或调试 Continuous or commissioning
工作温度 (°C) Operation temperature	10°C~35°C
电力需求 Power demand	220V/380V
焊接定位 Welding positioning	红光CCD Red light CCD

凭借先进的工艺和精密的控制
系统，能够轻松应对卫浴管复
杂角度的焊接需求，确保焊接
质量和稳定性；

With advanced technology and precise
control systems, it can easily meet the
welding demands of complex angles in
sanitary pipes, ensuring welding
quality and stability;

轻松换型，适用性广泛，设备
设计灵活，可轻松进行换型，
适用于不同规格和尺寸的卫浴
管焊接，提高了设备的适用性
和灵活性；

Easily adaptable with wide applicability,
the equipment features flexible design
allowing effortless switching between
different specifications and sizes of
bathroom pipes for welding, enhancing
its versatility and flexibility;

焊缝美观牢固，无需后期打
磨：激光焊接技术确保焊缝质
量高度美观且牢固，减少了后
期加工的需求，提高了生产效
率；

Finely crafted and robust weld seams,
requiring no post-weld polishing: Laser
welding technology ensures highly
aesthetic and durable weld seam
quality, reducing the need for
post-weld processing and enhancing
production efficiency;



双工位/平台激光焊机/梅花手柄焊接专机

Dual-station/Platform Laser Welding Machine/Plum Blossom Handle Welding Special Machine

MT-ZDSB16

功率/配置/其他参数 (均非标定制)



*以实物为准 Subject to the real object *更多详情官网 www.mt-laser.com

机型 Model	MT-ZDSB16
激光功率 (W) Laser power	1500 2000 3000 4000 6000 8000
激光波长 (nm) Laser wavelength	1080±5
功率可调范围 (%) Power regulation range	10~100%
光纤芯径 (μm) Fiber core diameter	20μm 50μm 100μm (视应用要求选配) As per application requirements
冷却方式 Cooling mode	水冷 water-cooling
工作模式 Working mode	连续或调试 Continuous or commissioning
工作温度 (°C) Operation temperature	10°C~35°C
电力需求 Power demand	220V/380V
焊接定位 Welding positioning	红光CCD Red light CCD

07

激光焊接设备
LASER WELDING EQUIPMENT

专注于梅花手柄自动化焊接需求，确保完美适配，提高生产效率；

Focusing on automated welding requirements for plum blossom handles, ensuring perfect fit and increasing production efficiency;

24小时不间断工作，持续稳定的生产能力，确保生产线的持续运转，最大限度提高产能；

24-hour uninterrupted work, sustained production capacity, ensuring continuous operation of production lines, maximizing productivity;

双工位布局，实现一边放件、一边焊接，持续工作，提高工作饱和度，最大程度节约时间成本；

Dual workstation layout, enabling concurrent placement and welding operations, ensuring continuous workflow, enhancing work saturation, and maximizing time cost efficiency;



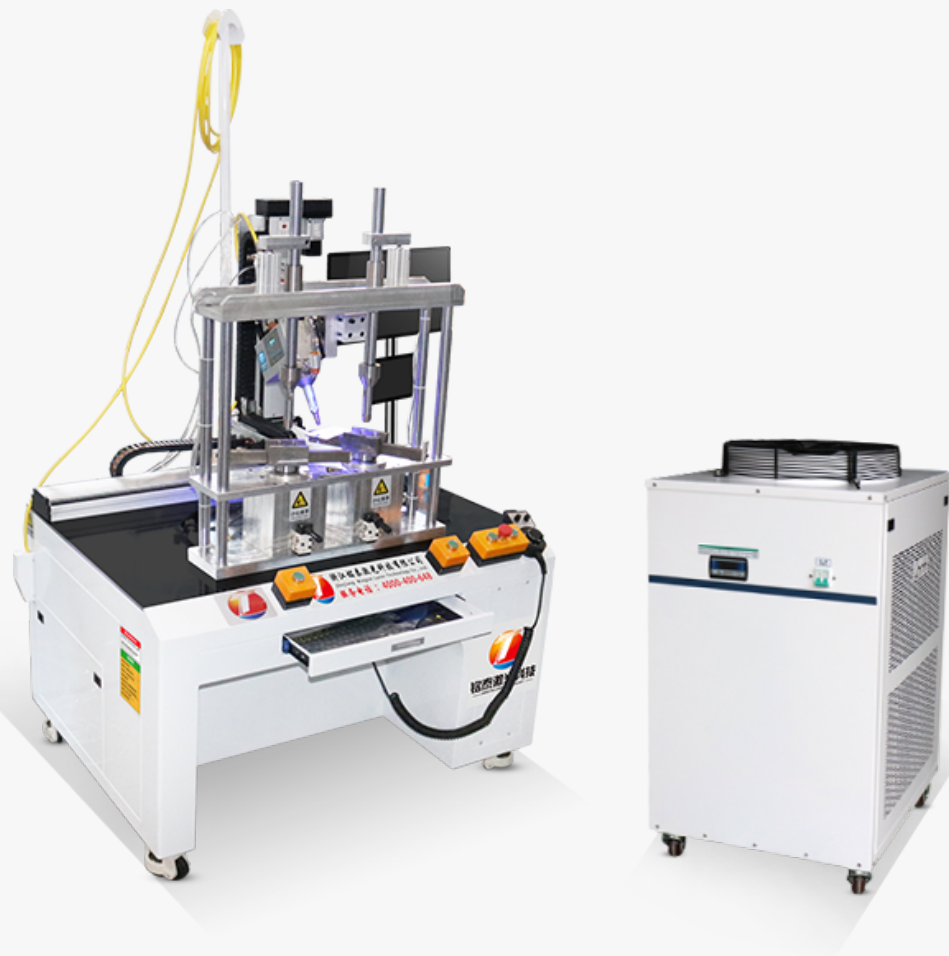
双工位/平台激光焊机/门把手焊接专机

Dual-station/platform laser welding machine/door handle welding special machine

MT-ZDSB21

功率/配置/其他参数 (均非标定制)

*以实物为准 Subject to the real object *更多详情官网 www.mtslaser.com



机型 Model	MT-ZDSB21
激光功率 (W) Laser power	1500 2000 3000 4000 6000 8000
激光波长 (nm) Laser wavelength	1080±5
功率可调范围 (%) Power regulation range	10~100%
光纤芯径 (μm) Fiber core diameter	20μm 50μm 100μm (视应用要求选配) As per application requirements
冷却方式 Cooling mode	水冷 water-cooling
工作模式 Working mode	连续或调试 Continuous or commissioning
工作温度 (°C) Operation temperature	10°C~35°C
电力需求 Power demand	220V/380V
焊接定位 Welding positioning	红光CCD Red light CCD

采用双工位设计，可同时进行放置和焊接操作，确保工作效率百分之百；

Dual-station design allows simultaneous placement and soldering operations, ensuring one hundred percent work efficiency;

采用伺服电机控制系统，可以灵活调节焊接轨迹，满足不同焊接需求；

Utilizing a servo motor control system enables flexible adjustment of welding trajectories to meet various welding requirements;

用于门把手的自动化激光焊接，满足其特殊需求，根据具体需求定制焊接工艺，增强了灵活性和适用性；

An automated laser welding system tailored for door handles, meeting their specific requirements, customizing welding processes accordingly, enhancing flexibility and applicability;



多轴平台激光自动焊机/浮球阀焊接专机

Multi-axis platform laser automatic welding machine / Floating ball valve welding special machine

MT-ZDSB29

功率/配置/其他参数 (均非标定制)



*以实物为准 Subject to the real object *更多详情官网 www.mt laser.com

机型 Model	MT-ZDSB29
激光功率 (W) Laser power	1500 2000 3000 4000 6000 8000
激光波长 (nm) Laser wavelength	1080±5
功率可调范围 (%) Power regulation range	10~100%
光纤芯径 (μm) Fiber core diameter	20μm 50μm 100μm (视应用要求选配) As per application requirements
冷却方式 Cooling mode	水冷 water-cooling
工作模式 Working mode	连续或调试 Continuous or commissioning
工作温度 (°C) Operation temperature	10°C~35°C
电力需求 Power demand	220V/380V
焊接定位 Welding positioning	红光CCD Red light CCD

09

激光焊接设备
LASER WELDING EQUIPMENT

高精度工装夹具，确保产品焊接时不发生偏移，保持焊接精度不偏离；

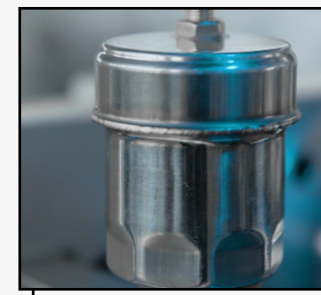
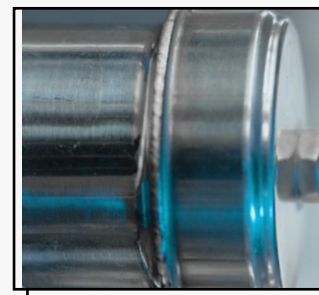
High-precision fixture ensures that the product does not shift during welding, maintaining welding accuracy without deviation;

激光焊接技术能够精准聚焦能量，使焊接过程中的能量利用率更高，从而降低能源消耗，节约生产成本；

Laser welding technology can precisely focus energy, increasing the energy utilization rate during the welding process, thereby reducing energy consumption and saving production costs;

与传统焊接方法相比，激光焊接不产生有害气体和废渣，符合环保要求，有利于企业可持续发展和社会责任；

Compared to traditional welding methods, laser welding does not produce harmful gases and waste residue, which complies with environmental requirements, benefiting sustainable development and corporate social responsibility;



多轴平台激光自动焊机/除虫花洒焊接专机

Multi-axis platform laser automatic welding machine / insect-repelling shower head welding special machine

MT-ZDSB37

功率/配置/其他参数 (均非标定制)

*以实物为准 Subject to the real object *更多详情官网 www.mtslaser.com



机型 Model	MT-ZDSB37
激光功率 (W) Laser power	1500 2000 3000 4000 6000 8000
激光波长 (nm) Laser wavelength	1080±5
功率可调范围 (%) Power regulation range	10~100%
光纤芯径 (μm) Fiber core diameter	20μm 50μm 100μm (视应用要求选配) As per application requirements
冷却方式 Cooling mode	水冷 water-cooling
工作模式 Working mode	连续或调试 Continuous or commissioning
工作温度 (°C) Operation temperature	10°C~35°C
电力需求 Power demand	220V/380V
焊接定位 Welding positioning	红光CCD Red light CCD

利用先进的非接触式激光焊接技术，实现对喷雾杆/喷雾花洒复杂角度的轻松焊接，保证焊接效果的完美与一致性；

Utilizing advanced non-contact laser welding technology to achieve effortless welding of complex angles of spray rods/sprinklers, ensuring perfect and consistent welding results;

高精度旋转轴设计，确保焊接过程中的每一步旋转动作都能达到卓越的精准度。这种精度超越了传统机械手焊接的能力，为焊接作业提供了更高水平的保障；

The high-precision rotary axis design ensures exceptional accuracy for each rotation during welding, surpassing the capabilities of traditional robotic welding and providing heightened assurance for welding tasks;

二十四小时连续工作的能力，确保生产线的持续运转，提高生产效率和产能；

The ability to work continuously for twenty-four hours, ensuring the continuous operation of the production line, and enhancing production efficiency and capacity;

