

The background of the entire page is a blurred industrial setting. In the foreground, several yellow robotic arms are visible, some of which are actively welding metal parts, creating bright sparks. The overall atmosphere is one of a busy, modern manufacturing environment.

自动化激光焊接 生产线/流水线

Automatic laser welding Production line/assembly line

自动化激光焊接生产线是一种高效、智能化的生产设备，采用激光焊接技术和自动化控制技术，可实现全自动化的生产流程。该生产线具有高效率、高精度、高稳定性、高一致性等优点，可以大幅提高生产效率和产品质量。同时，自动化激光焊接生产线还具有灵活性高、适应性强、能耗低等特点，可以满足不同规格和材质的产品的生产需求。自动化激光焊接生产线广泛应用于汽车、机械、电子、航空、航天等领域的生产线上，例如汽车车身、航空发动机、电子器件等的制造。总之，自动化激光焊接生产线是一种高效、智能化、灵活、节能的生产设备，将成为未来生产流程中的重要工具。

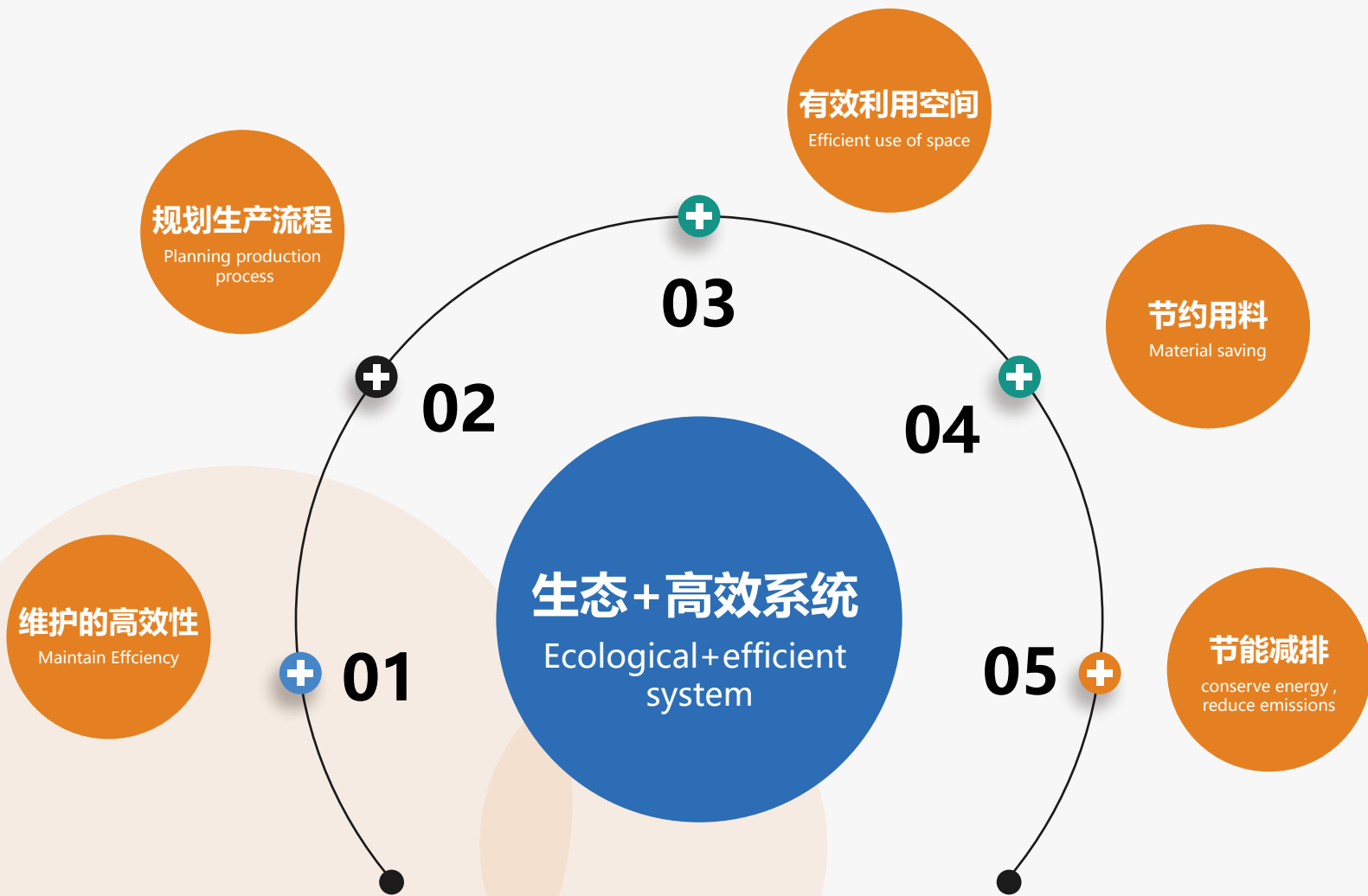
The automated laser welding production line is an efficient and intelligent production equipment that uses laser welding technology and automated control technology to achieve a fully automated production process. The production line has the advantages of high efficiency, precision, stability, and consistency, which can significantly improve production efficiency and product quality. Additionally, the automated laser welding production line is also characterized by high flexibility, strong adaptability, and low energy consumption, which can meet the production needs of products with different specifications and materials. The automated laser welding production line is widely used in production lines of various fields, such as automobiles, machinery, electronics, aviation, and aerospace, such as the manufacture of car bodies, aerospace engines, electronic devices, and more. In summary, the automated laser welding production line is an efficient, intelligent, flexible, and energy-saving production equipment that will become an important tool in future production processes.

以帮助客户创造最大价值为根本

Taking helping customers create maximum value as the basis

铭泰激光在激光焊接机、自动化生产线、激光切割机等方面拥有多项专利技术，并持续创新，不断提升技术水平，以满足客户不断增长的需求。我们的专业技术团队由一群拥有多年激光技术研发经验的工程师组成，他们致力于开发和提升激光焊接的科技水平，为各行业提供更好的激光焊接解决方案。

Mingtai Laser has a number of patented technologies in laser welding machines, automatic production lines, laser cutting machines, etc., and continues to innovate and improve the technical level to meet the growing needs of customers. Our professional technical team is composed of a group of engineers with many years of experience in laser technology research and development. They are committed to developing and improving the scientific and technological level of laser welding and providing better laser welding solutions for various industries.



生态+高效系统的优点包括节能减排、节约用料、有效利用空间、灵活性，以及规划、生产流程和维护的高效性，同时这也是铭泰激光以帮助客户创造最大价值为根本的实际体现。

The advantages of the ecological+efficient system include energy conservation and emission reduction, material saving, effective use of space, flexibility, and efficiency of planning, production process and maintenance. This is also the fundamental practical embodiment of Mingtai Laser to help customers create maximum value.

新能源汽车电机定子激光自动焊接生产线

New Energy Vehicle Motor Stator Laser Automatic Welding Production Line

MT-ZDSB33

功率/配置/其他参数 (均非标定制)



01

激光焊接设备
LASER WELDING EQUIPMENT

*以实物为准 Subject to the real object

*更多详情官网 www.mtsslaser.com

电机定子焊接精度高，确保生产中的稳定性和可靠性，最大程度提升产品质量；

The high precision welding of the motor stator ensures stability and reliability in production, maximizing product quality to the fullest extent;

流水线设计为多工位工作，可以同时进行多个定子进行焊接，提高了生产效率和产能；

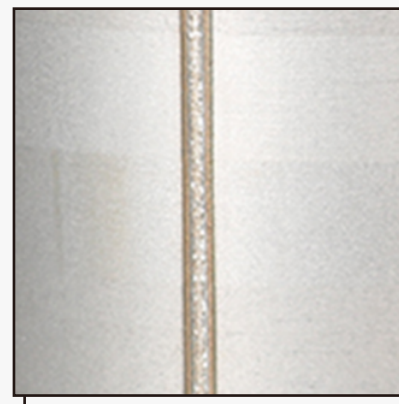
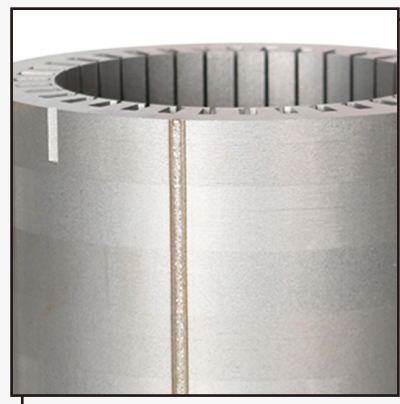
The assembly line is designed to work at multiple workstations, allowing for simultaneous welding of multiple stator cores, improving production efficiency and productivity;

激光焊接采用非接触式的焊接方式，无需直接接触工件，减少了机械损伤的风险，并确保焊接点的完整性和一致性；

Laser welding adopts non-contact welding mode, without direct contact with the workpiece, reducing the risk of mechanical damage, and ensuring the integrity and consistency of welding points;

生产线设计灵活，适用于不同规格和尺寸的电机定子。它可以根据需求进行调整和定制，适应多样化的生产要求；

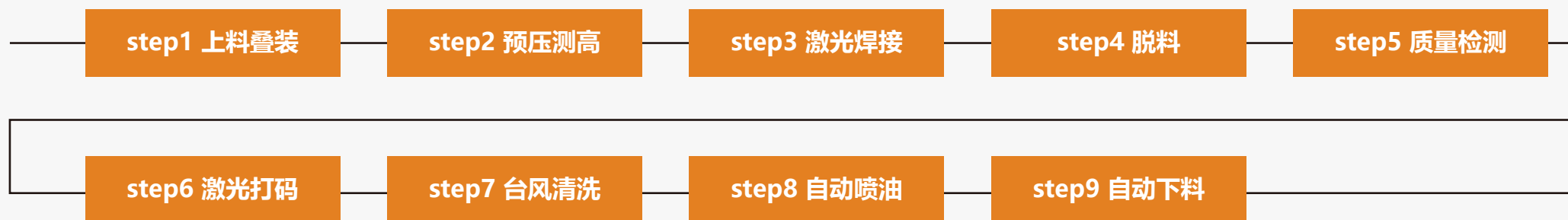
The production line design is flexible and suitable for motor rotors of different specifications and sizes. It can be adjusted and customized according to needs to adapt to diverse production requirements;



MT-ZDSB33

机型 Model	MT-ZDSB33
最大激光功率 (W) Maximum laser power	非标定制
其他参数 Other parameters	非标定制

产线工序



新能源汽车电机定子激光自动焊接生产线

New Energy Vehicle Motor Stator Laser Automatic Welding Production Line

MT-ZDSB06

功率/配置/其他参数 (均非标定制)



03

激光焊接设备
LASER WELDING EQUIPMENT

*以实物为准 Subject to the real object

*更多详情官网 www.mtsslaser.com

一站式完成电机定子铁芯转子总成生产线焊接;

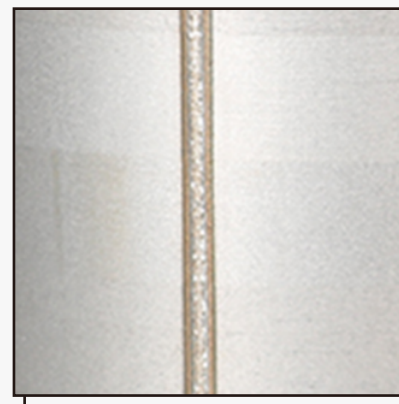
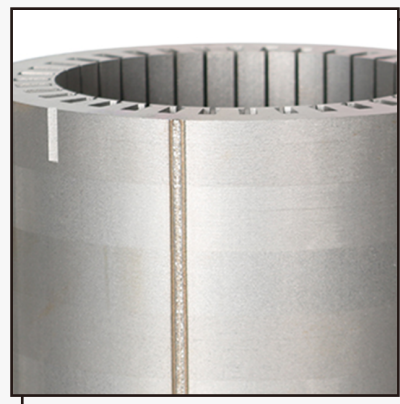
One-stop welding of the production line of the motor stator core rotor assembly;

采用自动上料、机械手臂搬运移料, 自动完成称重、槽型异物检测、测高及二维码激光打码读码等工序;

Automatic loading, mechanical arm handling and material transfer are adopted to automatically complete the weighing, slot foreign body detection, height measurement and two-dimensional code laser coding and code reading;

激光焊接方式无需直接接触工件, 减少机械损伤的风险;

It can be connected to the customer management system, and customers can realize MES management and control;



MT-ZDSB06

机型 Model	MT-ZDSB06
最大激光功率 (W) Maximum laser power	非标定制
其他参数 Other parameters	非标定制

产线工序



新能源汽车电机定子激光自动焊接生产线

New Energy Vehicle Motor Stator Laser Automatic Welding Production Line

MT-ZDSB44

功率/配置/其他参数 (均非标定制)



05

激光焊接设备
LASER WELDING EQUIPMENT

*以实物为准 Subject to the real object

*更多详情官网 www.mtslaser.com

针对电机定子设计，实现个性化生产，精准控制焊接参数，确保生产效率与一致性；

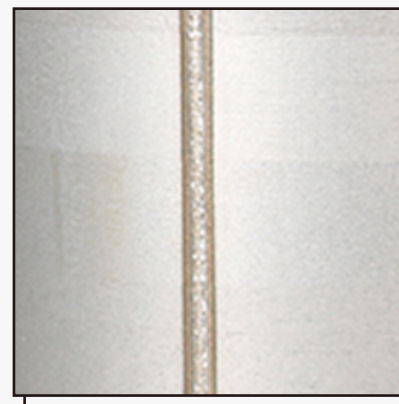
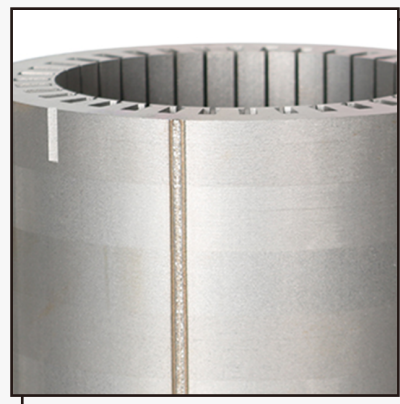
By focusing and controlling the laser beam, a non-contact and non-destructive welding process can be achieved, ensuring welding quality and accuracy;

生产线配备智能化的自动化控制系统，实现对焊接过程的精确控制和监测，确保了一致的焊接质量，提高了产品的稳定性和可靠性；

The production line is equipped with an intelligent automation control system to achieve precise control and monitoring of the welding process, ensuring consistent welding quality and improving product stability and reliability;

生产线的设计和布局灵活，适用于不同规格和尺寸的定子。它可以根据不同的生产需求进行调整和定制，满足多样化的生产要求；

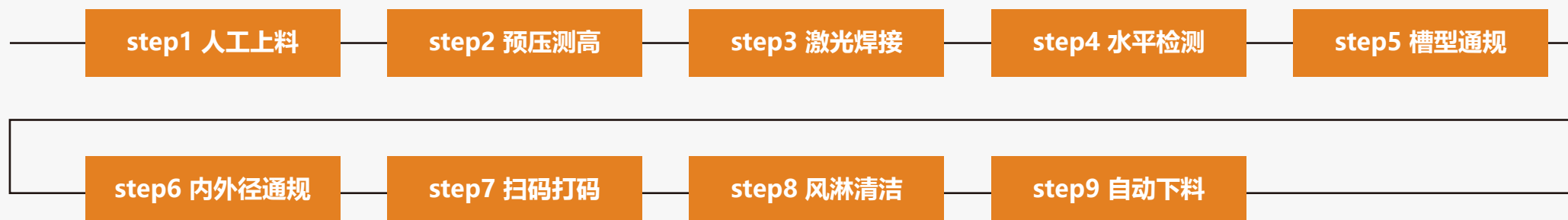
The design and layout of the production line are flexible and suitable for stator cores of different specifications and sizes. It can be adjusted and customized according to different production needs to meet diverse production requirements;



MT-ZDSB44

机型 Model	MT-ZDSB44
最大激光功率 (W) Maximum laser power	非标定制
其他参数 Other parameters	非标定制

产线工序



新能源汽车电机转子铆压线

Electric Vehicle Motor Rotor Riveting Line

MT-ZDSB45

功率/配置/其他参数 (均非标定制)



*以实物为准 Subject to the real object

*更多详情官网 www.mtsslaser.com

具备精密的铆压控制系统，确保转子组件的精准定位和稳定压合，保证产品质量和一致性；

Possessing a precise riveting control system to ensure the accurate positioning and stable compression of rotor components, guaranteeing product quality and consistency;

具备灵活的多功能设计，可适应不同型号和规格的转子组装需求，提供定制化生产解决方案；

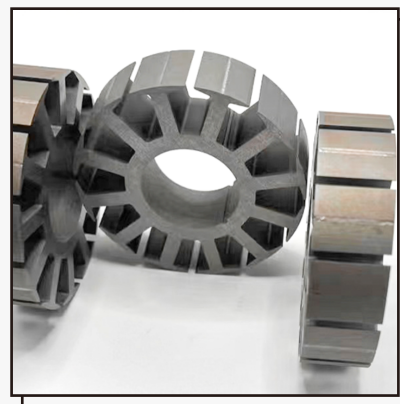
Featuring a flexible and multifunctional design, it accommodates various rotor assembly needs of different models and specifications, offering customized production solutions;

设备结构坚固耐用，配备高品质零部件，保证长时间稳定运行，确保生产的可靠质量；

Robust and durable equipment structure, equipped with high-quality components, ensures long-term stable operation, guaranteeing reliable production quality;

设备采用先进技术，实现高效率的自动化生产流程，提高生产速度并降低人力成本；

The equipment adopts advanced technology to achieve an efficient automated production process, enhancing production speed while reducing labor costs;



MT-ZDSB45

机型 Model	MT-ZDSB45
最大激光功率 (W) Maximum laser power	非标定制
其他参数 Other parameters	非标定制

产线工序

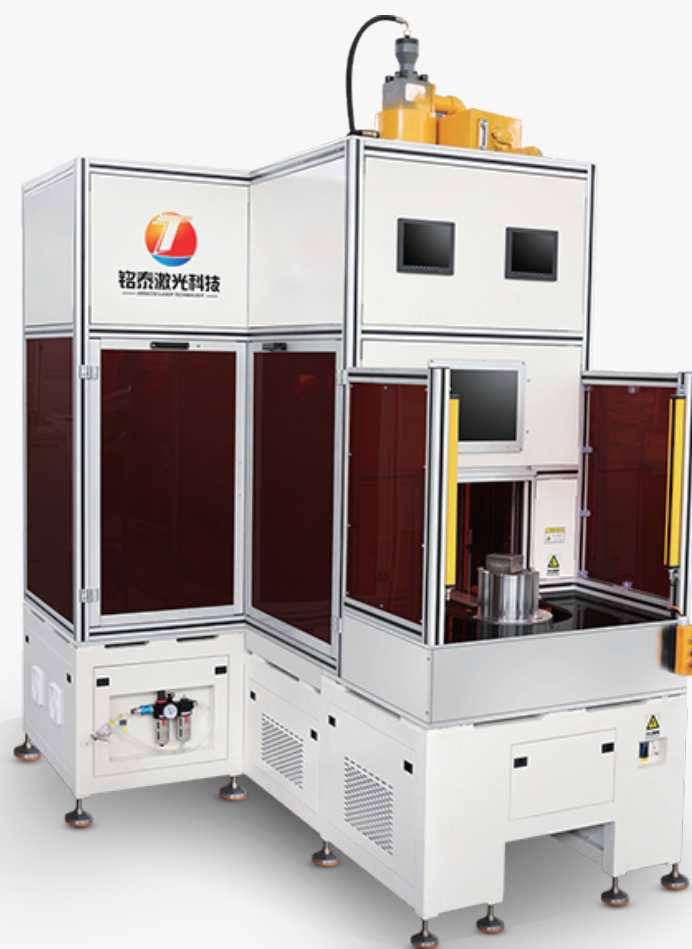


新能源汽车电机定子激光自动焊接单机

Laser Automatic Welding Unit for New Energy Vehicle Motor Stator

MT-ZDSB31

功率/配置/其他参数 (均非标定制)



*以实物为准 Subject to the real object

*更多详情官网 www.mtislaser.com

确保定子单元均匀稳定焊接，保障品质一致性，高精度焊接定子零件，减少误差，提升质量；

Ensure uniform and stable welding of stator units to guarantee consistent quality, weld high-precision stator components to minimize errors, and enhance overall quality;

通用性高，扩展性强，可通过切换工装模块，实现不同规格产品生产；

High universality and strong scalability, capable of producing products of different specifications by switching tooling modules;

通过工艺优化，减少生产中的停机时间，提升整体生产效率；

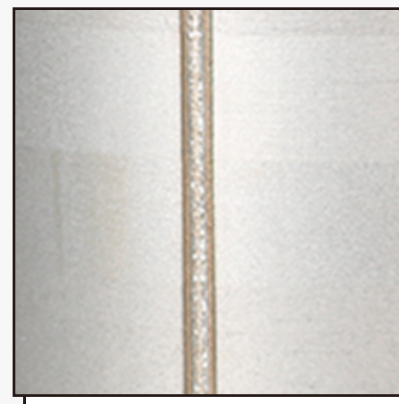
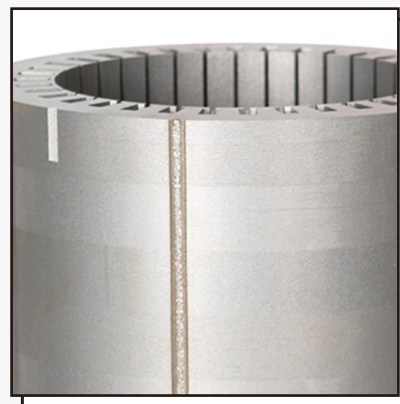
Optimize processes to reduce downtime in production and enhance overall manufacturing efficiency;

简化流程、提升生产效率，减少制造周期，增强定子组装的效能；

Simplify the process, improve production efficiency, reduce manufacturing cycles, and enhance the efficiency of stator assembly;

09

激光焊接设备
LASER WELDING EQUIPMENT



MT-ZDSB31

机型 Model	MT-ZDSB31
最大激光功率 (W) Maximum laser power	非标定制
其他参数 Other parameters	非标定制

单机工序



新能源汽车电机定子激光自动焊接单机

Laser Automatic Welding Unit for New Energy Vehicle Motor Stator

MT-ZDSB54

功率/配置/其他参数 (均非标定制)



*以实物为准 Subject to the real object

*更多详情官网 www.mtsslaser.com

对定子部件进行高精度焊接，减少误差，提升整体质量；

Accurately welding mating components to reduce errors and enhance overall quality;

专为定子焊接工艺设计的自动化功能，减少人工干预，适用于多种定子材料，确保生产和组装的灵活性；

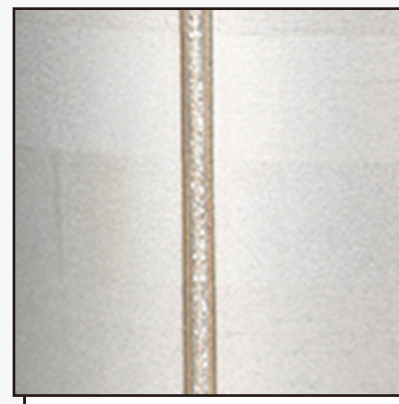
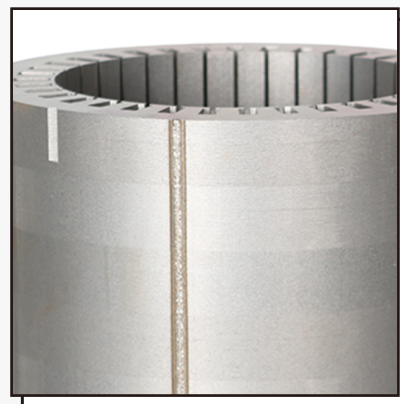
Automated functionalities designed specifically for stator welding processes, minimizing manual intervention, adaptable to various stator materials, ensuring flexibility in production and assembly;

利用激光技术实现定子部件的优质焊接，确保耐用性和可靠性；

Utilizing laser technology to achieve high-quality welding of stator components, ensuring durability and reliability;

提供可靠稳定的焊接解决方案，有助于提升最终产品中定子的可靠性，简化工序，提升生产效率；

Provide a reliable and stable welding solution that contributes to enhancing the reliability of the stator in the final product, streamlines processes, and improves production efficiency;



MT-ZDSB54

机型 Model	MT-ZDSB54
最大激光功率 (W) Maximum laser power	非标定制
其他参数 Other parameters	非标定制

单机工序

