



机械手臂多轴多工位 激光自动化焊接设备

Multi-axis manipulator/closed laser automatic welding machine

机械臂激光焊接机是一种先进的焊接设备，它采用激光器和机械臂系统协同工作进行焊接操作。机械臂激光焊接机具有高精度、高稳定性、高可靠性等特点，能够对各种金属材料进行高质量的焊接，包括不锈钢、铝合金、铜、钛、镁等材料。此外，机械臂激光焊接机具有较大的工作范围，可以实现三维空间内的焊接操作。机械臂激光焊接机不需要接触焊接材料，具有无污染、无接触、无变形等优点，避免了传统焊接方式可能带来的质量问题。同时，机械臂激光焊接机还具有焊接速度快、焊接点小、操作灵活等优点，广泛应用于汽车、机械、电子等行业中的各种焊接需求。总之，机械臂激光焊接机是一种高效、精准、环保、灵活的焊接设备，将成为未来焊接技术的重要代表之一。

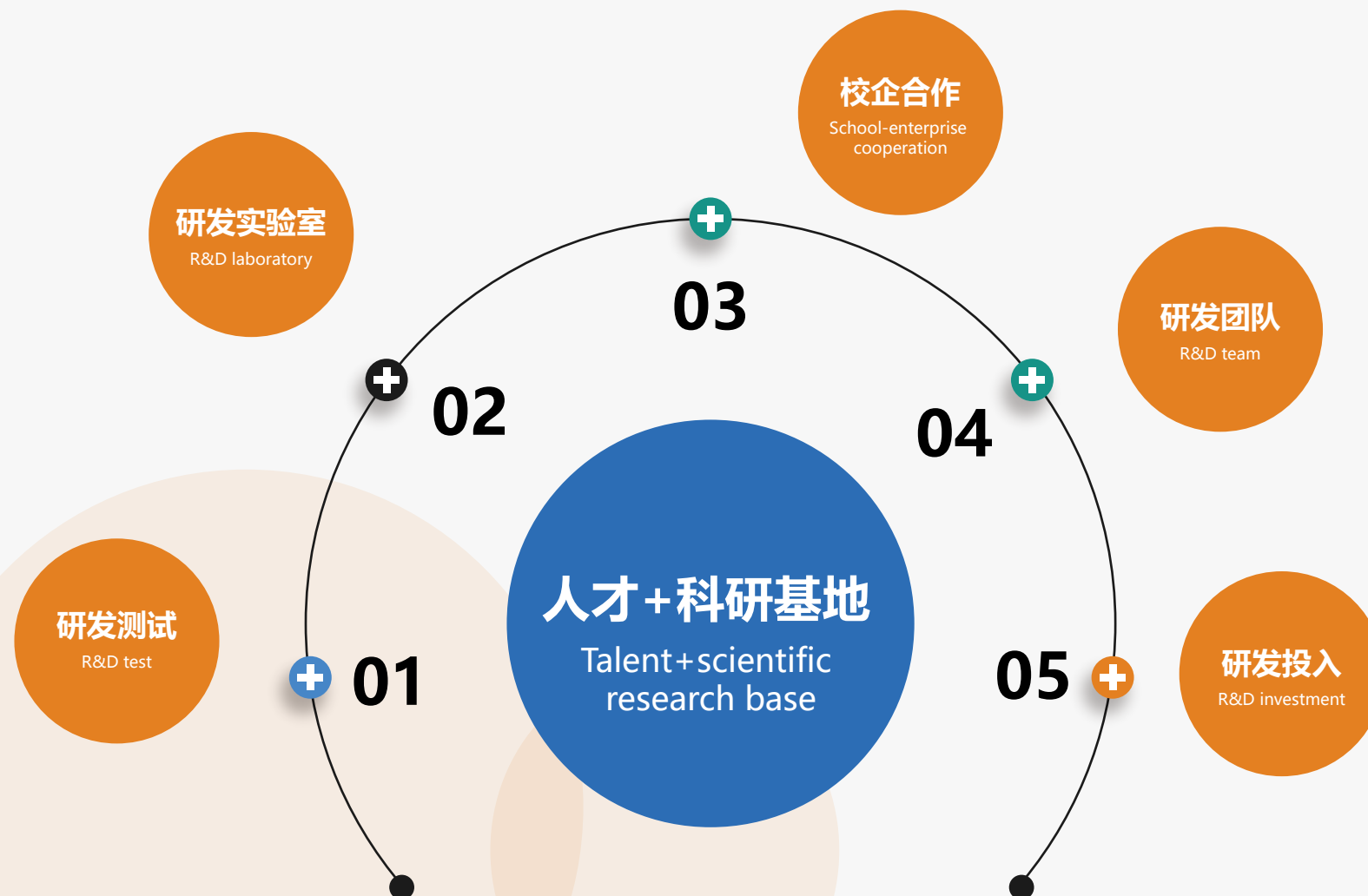
The robotic arm laser welding machine is an advanced welding device that uses a laser and a robotic arm system to perform welding operations. The robotic arm laser welding machine has the characteristics of high precision, stability, and reliability, and can perform high-quality welding on various metal materials, including stainless steel, aluminum alloys, copper, titanium, magnesium, and other materials. In addition, the robotic arm laser welding machine has a large working range and can perform welding operations in three-dimensional space. The robotic arm laser welding machine does not require contact with the welding material, and has the advantages of no pollution, no contact, and no deformation, avoiding the quality problems that traditional welding methods may bring. At the same time, the robotic arm laser welding machine also has the advantages of fast welding speed, small welding spot, and flexible operation, and is widely used in various welding needs in industries such as automobiles, machinery, and electronics. In summary, the robotic arm laser welding machine is an efficient, precise, environmentally friendly, and flexible welding device and will become an important representative of future welding technology.

改变世界装备格局，推动人类智造进步

Change the world equipment pattern and promote the progress of human intelligent manufacturing

铭泰激光秉持“创新、合作、责任、分享”的企业文化，致力于提供最优质的激光焊接技术和服务。我们坚信创新是企业的生命力，因此我们鼓励员工提出新的想法，并为他们提供良好的学习和发展环境，以便他们将自己的想法转化为实际产品。此外，我们还注重员工的团队协作能力，鼓励他们开展合作与交流，共同推动企业的发展。

Mingtai Laser adheres to the corporate culture of "innovation, cooperation, responsibility and sharing" and is committed to providing the best laser welding technology and services. We firmly believe that innovation is the vitality of enterprises, so we encourage employees to put forward new ideas and provide them with a good learning and development environment so that they can transform their ideas into practical products. In addition, we also pay attention to the teamwork ability of employees, encourage them to carry out cooperation and exchange, and jointly promote the development of the enterprise.



人才+科研基地，不断突破传统产品技术开发模式，引入先进开发工程方法与工具，与国家大学科技园共同成立研究院。

Talent+scientific research base, constantly breaking through the traditional product technology development mode, introducing advanced development engineering methods and tools, and jointly establishing a research institute with the National University Science Park.

高功率/多工位/机械手臂激光自动焊接站

High-power/Multi-station/Robotic Arm Laser Automatic Welding Station

MT-JXB05

功率/配置/其他参数 (均非标定制)



*以实物为准 Subject to the real object

*更多详情官网 www.mtsslaser.com

搭载20000瓦高功率激光器，确保高效能焊接，提供更快焊接速度和更深的穿透力，适用于各种厚度的材料；

Equipped with a 20,000-watt high-power laser emitter, ensuring efficient welding, providing faster welding speeds, and deeper penetration suitable for various material thicknesses;

设备设计具备多个工位，能够同时或连续处理多个工件，提高生产效率和产能，降低生产成本；

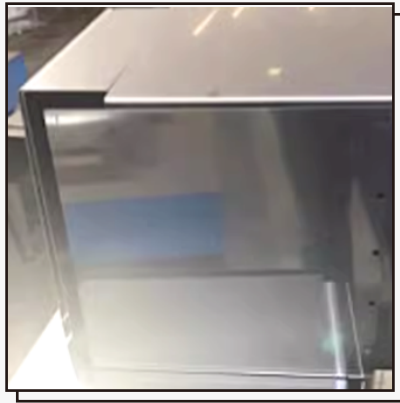
Designed with multiple stations, capable of simultaneous or consecutive processing of multiple workpieces, enhancing production efficiency, and reducing production costs;

焊缝美观，焊接后工件表面光滑，减少或消除了后期打磨的需要，从而节省时间和成本；

Aesthetic weld seams with smooth surfaces on the welded workpieces, reducing or eliminating the need for post-weld grinding, thereby saving time and costs;

能够针对复杂工件进行焊接，应对各种刁钻角度的焊接需求，机械手六轴灵活自如，实现高难度焊接任务；

Capable of welding complex workpieces, addressing various challenging angles, thanks to the flexibility of the six-axis mechanical arm, achieving high-difficulty welding tasks effortlessly;



MT-JXB05

机型 Model	MT-JXB05
激光功率 (W) Laser power	20000
重复定位精度 (mm) Repeated positioning accuracy	±0.01
焊接定位 Welding positioning	红光CCD (可选配视觉和激光测高) Red light CCD (optional with vision and laser altimetry)
供电电源 Power supply	380VAC±10%/3P+N+PE
冷却方式 Cooling mode	水冷 water-cooling
工作模式 Working mode	连续或调试 Continuous or commissioning
激光波长 (nm) Laser wavelength	1080±10
脉冲频率 (Hz) Fiber length	≤50

光点调节范围 (mm) Adjustment range	0.1-3.0
---------------------------------	---------

单工位/电视机后盖焊接专机/机械手激光焊接站

Single workstation/TV back cover welding specialized machine/mechanical arm laser welding station

MT-JXB06

功率/配置/其他参数 (均非标定制)



*以实物为准 Subject to the real object

*更多详情官网 www.mtislaser.com

设备专为电视机后盖板设计，确保焊缝美观牢固。六轴机械手轻松处理复杂工件、刁钻角度；

Tailored for TV back cover panels, ensuring neat, durable welds. The six-axis arm adeptly handles intricate workpieces and tricky angles;

可集成流水线，24小时不间断运行。机械手灵活性使其无需人工干预，提高生产效率；

Easily integrated into assembly lines, operates non-stop for 24 hours. The robotic arm's flexibility eliminates human intervention, enhancing production efficiency;

六轴机械手随时调整焊接参数，确保焊接质量和效率平衡；

The six-axis arm swiftly adjusts welding parameters, maintaining a fine balance between quality and efficiency.;

激光焊接技术保证焊接后表面整洁，无需打磨处理。高精度焊接减少后续加工工序，节约时间和成本；

Laser welding ensures clean surfaces, eliminating polishing needs. High-precision welding minimizes additional processing, saving time and costs;



MT-JXB06

机型 Model	MT-JXB06
激光功率 (W) Laser power	400-20000 (可选)
重复定位精度 (mm) Repeated positioning accuracy	±0.01
焊接定位 Welding positioning	红光CCD (可选配视觉和激光测高) Red light CCD (optional with vision and laser altimetry)
供电电源 Power supply	380VAC±10%/3P+N+PE
冷却方式 Cooling mode	水冷 water-cooling
工作模式 Working mode	连续或调试 Continuous or commissioning
激光波长 (nm) Laser wavelength	1080±10
脉冲频率 (Hz) Fiber length	≤50
光点调节范围 (mm) Adjustment range	0.1-3.0

多工位/转盘式/机械手臂激光自动焊接站

Multi-station/Rotary/Robotic Arm Laser Automatic Welding Station

MT-JXB04

功率/配置/其他参数 (均非标定制)



*以实物为准 Subject to the real object

*更多详情官网 www.mtislaser.com

采用转盘式设计，可同时进行放置工件和焊接作业，让工件在焊接过程中实现同步旋转，一边焊接一边放样，节省生产时间；

The turntable-style design enables concurrent workpiece placement and welding, allowing synchronized rotation during welding. This simultaneous process saves production time by welding on one side while positioning on the other;

机械臂具备六轴灵活转动功能，能够轻松应对复杂和刁钻的角度，完成焊接任务，无需人工干预，提高焊接精度和速度；

The robotic arm is equipped with six-axis flexible rotation capability, allowing it to easily handle complex and intricate angles, completing welding tasks without the need for human intervention, thereby enhancing welding precision and speed;

焊接完成后，设备能够确保焊缝平整、美观，减少或消除了二次打磨的需求，节省了后续加工的时间和成本；

After welding, the equipment ensures smooth and aesthetically pleasing weld seams, reducing or eliminating the need for secondary polishing. This saves time and costs in subsequent processing;

能够按照客户需求进行非标定制，针对不同的工件形状和尺寸进行调整，灵活应对多样化的焊接需求；

It can be customized according to customer requirements, adjusting to different shapes and sizes of workpieces, flexibly meeting diverse welding needs;



MT-JXB04

机型 Model	MT-JXB04
激光功率 (W) Laser power	400-20000 (可选)
重复定位精度 (mm) Repeated positioning accuracy	±0.01
焊接定位 Welding positioning	红光CCD (可选配视觉和激光测高) Red light CCD (optional with vision and laser altimetry)
供电电源 Power supply	380VAC±10%/3P+N+PE
冷却方式 Cooling mode	水冷 water-cooling
工作模式 Working mode	连续或调试 Continuous or commissioning
激光波长 (nm) Laser wavelength	1080±10
脉冲频率 (Hz) Fiber length	≤50

光点调节范围 (mm) Adjustment range	0.1-3.0
---------------------------------	---------

多工位/机械手臂激光自动焊接站

Multi-station/Robotic Arm Laser Automatic Welding Station

MT-JXB03

功率/配置/其他参数 (均非标定制)



*以实物为准 Subject to the real object

*更多详情官网 www.mtsslaser.com

多工位设计的设备允许同时进行多个工序，这种设计显著提升了生产效率，大幅缩短了生产周期；

The equipment with a multi-station design allows simultaneous operations of multiple processes, significantly enhancing production efficiency and notably reducing production cycles;

机械臂配备六轴灵活转动功能，轻松处理复杂和棘手的角度，顺利完成焊接任务，无需人工干预，显著提升了焊接的精度和速度；

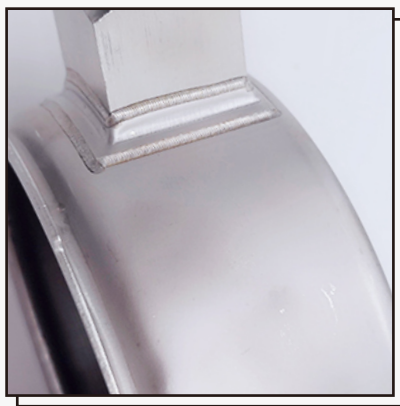
The mechanical arm is equipped with a six-axis flexible rotation capability, effortlessly handling complex and intricate angles to smoothly accomplish welding tasks without the need for manual intervention, significantly enhancing welding precision and speed;

设备操作相对简单，可通过程序控制和监控完成自动化焊接，减少了人为操作的错误和安全隐患；

The operation of the equipment is relatively simple, allowing for automated welding through program control and monitoring, reducing human errors and potential safety hazards;

可与流水线集成，实现自动化生产，焊接完成的工件可直接进入下一个工序，避免停顿和等待，提高整体生产效率；

It can be integrated with assembly lines to achieve automated production. Once the welding is completed, the workpiece can seamlessly proceed to the next process, avoiding pauses and waiting times, thereby enhancing overall production efficiency;



MT-JXB03

机型 Model	MT-JXB03
激光功率 (W) Laser power	400-20000 (可选)
重复定位精度 (mm) Repeated positioning accuracy	±0.01
焊接定位 Welding positioning	红光CCD (可选配视觉和激光测高) Red light CCD (optional with vision and laser altimetry)
供电电源 Power supply	380VAC±10%/3P+N+PE
冷却方式 Cooling mode	水冷 water-cooling
工作模式 Working mode	连续或调试 Continuous or commissioning
激光波长 (nm) Laser wavelength	1080±10
脉冲频率 (Hz) Fiber length	≤50

光点调节范围 (mm) Adjustment range	0.1-3.0
---------------------------------	---------

多工位/配电箱焊接专机/机械臂激光自动焊接站

Multi-station/Distribution Box Welding Specialized Machine/Robotic Arm Laser Automatic Welding Station

MT-JXB04-2

功率/配置/其他参数 (均非标定制)



*以实物为准 Subject to the real object

*更多详情官网 www.mtislaser.com

设备配置多个工作站，配电箱焊接作业时，允许同时进行件放置和焊接操作，提高工作效率；

The equipment is equipped with multiple workstations, allowing simultaneous component placement and welding operations during distribution box welding tasks, thereby enhancing work efficiency;

机械臂设计灵活，可以在六个方向进行精确移动和操作，适用于各种角度和位置的焊接任务；

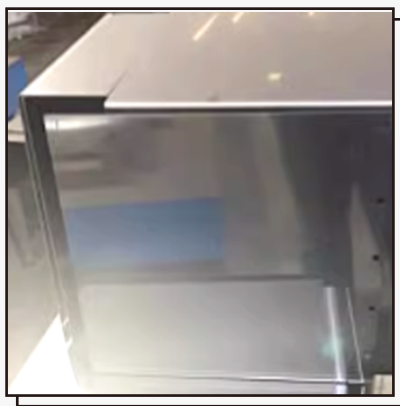
The robotic arm is designed to be flexible, allowing precise movement and operation in six directions, suitable for various angles and positions required in welding tasks;

焊接结果高质量，焊缝平整、美观，无需额外的后续打磨处理，节省时间成本；

The welding results are of high quality, with smooth and aesthetically pleasing weld seams, requiring no additional post-weld grinding, thus saving time and costs;

能够连续工作，支持24小时不间断运行，提供持续稳定的生产能力；

Capable of continuous operation, supports uninterrupted 24-hour running, and provides consistent stable production capability;



MT-JXB04-2

机型 Model	MT-JXB04-2
激光功率 (W) Laser power	400-20000 (可选)
重复定位精度 (mm) Repeated positioning accuracy	±0.01
焊接定位 Welding positioning	红光CCD (可选配视觉和激光测高) Red light CCD (optional with vision and laser altimetry)
供电电源 Power supply	380VAC±10%/3P+N+PE
冷却方式 Cooling mode	水冷 water-cooling
工作模式 Working mode	连续或调试 Continuous or commissioning
激光波长 (nm) Laser wavelength	1080±10
脉冲频率 (Hz) Fiber length	≤50
光点调节范围 (mm) Adjustment range	0.1-3.0

单工位/电视机后盖焊接专机/机械臂激光焊接站

Single-station/Television Back Cover Welding Specialized Machine/Robotic Arm Laser Welding Station

MT-JXB01

功率/配置/其他参数 (均非标定制)



*以实物为准 Subject to the real object

*更多详情官网 www.mtsslaser.com

设备与流水线结合，实现了高效的生产流程。组装好的零件在流水线上传送至焊接站，从而实现无缝操作；

The integration of the equipment with the assembly line has achieved an efficient production workflow. Assembled components are conveyed on the assembly line to the welding station;

对于电视机后盖焊接做到完美解决方案，具备处理曲面和直线焊接的能力，确保焊接结果的高质量；

For achieving the perfect solution in welding the back cover of a television set, possessing the capability to handle both curved and linear welding, ensuring a high-quality welding outcome;

能够轻松处理各种复杂、高难度的焊接角度和要求，确保焊接质量和稳定性；

Capable of effortlessly managing various complex and challenging welding angles and requirements, ensuring welding quality and stability;

机械臂设计灵活，可在六个方向进行精确移动和操作，以适应各种角度和位置的焊接任务；

The robotic arm is designed to be flexible, allowing precise movement and operation in six directions to accommodate various angles and positions required for welding tasks



MT-JXB01

机型 Model	MT-JXB01
激光功率 (W) Laser power	400-20000 (可选)
重复定位精度 (mm) Repeated positioning accuracy	±0.01
焊接定位 Welding positioning	红光CCD (可选配视觉和激光测高) Red light CCD (optional with vision and laser altimetry)
供电电源 Power supply	380VAC±10%/3P+N+PE
冷却方式 Cooling mode	水冷 water-cooling
工作模式 Working mode	连续或调试 Continuous or commissioning
激光波长 (nm) Laser wavelength	1080±10
脉冲频率 (Hz) Fiber length	≤50
光点调节范围 (mm) Adjustment range	0.1-3.0

手套模具焊接专机/机械手臂激光自动焊接站

Glove Mold Welding Specialized Machine / Robotic Arm Laser Automated Welding Station

MT-JXB02

功率/配置/其他参数 (均非标定制)



*以实物为准 Subject to the real object

*更多详情官网 www.mtislaser.com

专门为手套模具焊接而设计的，因此能够满足手套模具焊接的特殊需求，包括焊接位置、形状和精度要求等；

Specifically designed for welding glove molds, this equipment can meet the specific requirements of welding glove molds, including welding positions, shapes, and precision requirements;

机械手激光焊接站设备可以集成到生产流水线中，实现自动化焊接，提高生产效率，降低人工干预，减少生产周期；

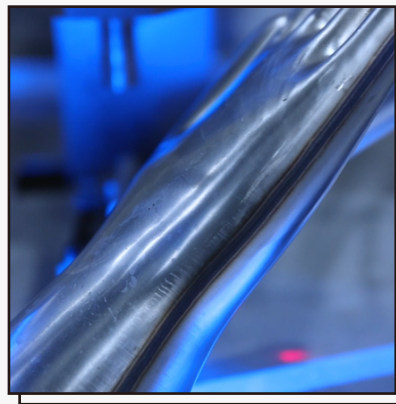
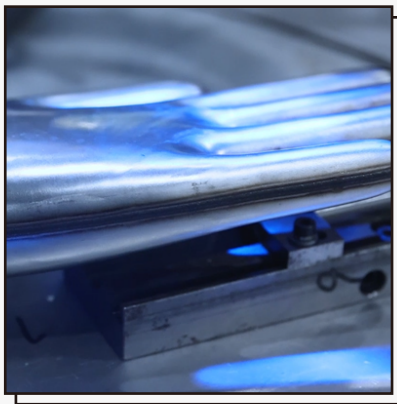
The mechanical robotic laser welding station can be integrated into the production line, enabling automated welding, enhancing production efficiency, reducing manual intervention, and decreasing the production cycle;

灵活的六轴机械手臂，可以在多个方向和角度进行焊接操作，提高了焊接的灵活性和适应性；

The flexible six-axis robotic arm enables welding operations in multiple directions and angles, enhancing welding flexibility and adaptability;

能够确保焊接的完整性和一致性，焊缝平整且美观，提高了产品的外观质量；

Ensuring the integrity and consistency of welding, with smooth and aesthetically pleasing weld seams, enhances the product's visual quality;



MT-JXB02

机型 Model	MT-JXB02
激光功率 (W) Laser power	400-20000 (可选)
重复定位精度 (mm) Repeated positioning accuracy	±0.01
焊接定位 Welding positioning	红光CCD (可选配视觉和激光测高) Red light CCD (optional with vision and laser altimetry)
供电电源 Power supply	380VAC±10%/3P+N+PE
冷却方式 Cooling mode	水冷 water-cooling
工作模式 Working mode	连续或调试 Continuous or commissioning
激光波长 (nm) Laser wavelength	1080±10
脉冲频率 (Hz) Fiber length	≤50
光点调节范围 (mm) Adjustment range	0.1-3.0