

多轴平台激光自动焊机/锁体面板焊接专机

Multi-axis platform laser automatic welding machine / Lock body panel welding special machine

MT-ZDSB60
功率/配置/其他参数 (均非标定制)



*以实物为准 Subject to the real object *更多详情官网 www.mtsslaser.com

机型 Model	MT-ZDSB60
激光功率 (W) Laser power	1500 2000 3000 4000 6000 8000
激光波长 (nm) Laser wavelength	1080±5
功率可调范围 (%) Power regulation range	10~100%
光纤芯径 (μm) Fiber core diameter	20μm 50μm 100μm (视应用要求选配) As per application requirements
冷却方式 Cooling mode	水冷 water-cooling
工作模式 Working mode	连续或调试 Continuous or commissioning
工作温度 (°C) Operation temperature	10°C~35°C
电力需求 Power demand	220V/380V
焊接定位 Welding positioning	红光CCD Red light CCD

专门为锁体面板而设计，充分考虑了锁体焊接的特殊需求，确保焊接效果和质量；

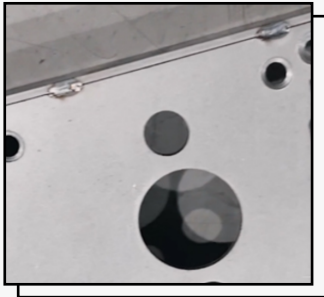
Specially designed for lock body panels, fully considering the special requirements of lock body welding, ensuring welding effectiveness and quality;

能够显著提升生产效率，保证焊接质量，降低了人工成本和废品率，是锁体面板自动化焊接的理想解决方案；

This solution significantly enhances production efficiency, ensures welding quality, and reduces labor costs and scrap rates, making it the ideal solution for automated welding of lock body panels;

采用激光技术进行焊接，完全摆脱传统焊接中的接触方式，避免了材料表面损伤和变形，确保焊接品质；

Utilizing laser technology for welding, it completely eliminates the contact method typical of traditional welding, thus avoiding material surface damage and deformation, ensuring welding quality;



多轴平台激光自动焊机/液压油缸焊接专机

Multi-axis platform laser automatic welding machine / Hydraulic cylinder welding special machine

MT-ZDSB61

功率/配置/其他参数（均非标定制）

*以实物为准 Subject to the real object *更多详情官网 www.mtslaser.com



机型 Model	MT-ZDSB61
激光功率 (W) Laser power	1500 2000 3000 4000 6000 8000
激光波长 (nm) Laser wavelength	1080±5
功率可调范围 (%) Power regulation range	10~100%
光纤芯径 (μm) Fiber core diameter	20μm 50μm 100μm (视应用要求选配) As per application requirements
冷却方式 Cooling mode	水冷 water-cooling
工作模式 Working mode	连续或调试 Continuous or commissioning
工作温度 (°C) Operation temperature	10°C~35°C
电力需求 Power demand	220V/380V
焊接定位 Welding positioning	红光CCD Red light CCD

采用专业的PC机电脑编程控制技术，操作简便，轻松实现焊接轨迹的精准控制和管理，大大提高了生产效率和产品质量；

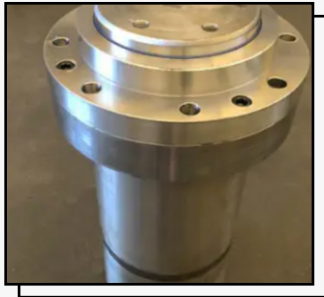
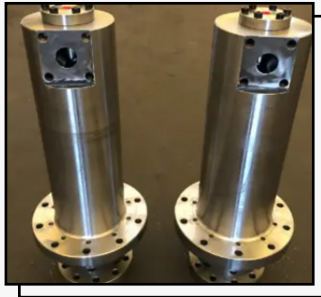
Utilizing professional PC-based programming and control technology, the operation is simple, enabling precise control and management of welding trajectories, significantly enhancing production efficiency and product quality;

焊接完成后，焊缝清晰、美观且牢固，无需额外的后期打磨，节省了人力和时间成本；

After welding, the weld is clear, beautiful, and sturdy, without the need for additional post-weld grinding, saving manpower and time costs;

设备专门为液压油缸的自动化焊接而打造，充分考虑了液压油缸的特殊焊接需求和工艺要求；

The equipment is specially designed for the automated welding of hydraulic cylinders, fully considering the special welding requirements and process demands of hydraulic cylinders;



多轴平台激光自动焊机/暖气片焊接专机

Multi-axis platform laser automatic welding machine / Special machine for radiator welding

MT-ZDSB59
功率/配置/其他参数 (均非标定制)



*以实物为准 Subject to the real object *更多详情官网 www.mtislaser.com

机型 Model	MT-ZDSB59
激光功率 (W) Laser power	1500 2000 3000 4000 6000 8000
激光波长 (nm) Laser wavelength	1080±5
功率可调范围 (%) Power regulation range	10~100%
光纤芯径 (μm) Fiber core diameter	20μm 50μm 100μm (视应用要求选配) As per application requirements
冷却方式 Cooling mode	水冷 water-cooling
工作模式 Working mode	连续或调试 Continuous or commissioning
工作温度 (°C) Operation temperature	10°C~35°C
电力需求 Power demand	220V/380V
焊接定位 Welding positioning	红光CCD Red light CCD

采用先进的伺服电机技术，可根据需要调节焊接轨迹，满足不同暖气片的焊接要求；

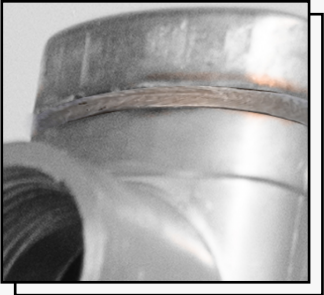
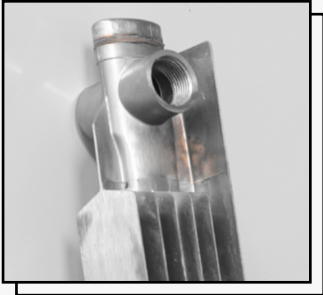
Adopting advanced servo motor technology, the welding trajectory can be adjusted as needed to meet the welding requirements of different radiators;

设备配备了精密的工装夹具，专为暖气片的形状和尺寸设计，确保焊接过程中暖气片的稳定固定，提高了焊接的精度和一致性。

The equipment is equipped with precision fixtures designed specifically for the shape and size of the radiator fins, ensuring stable fixation of the fins during the welding process.

智能化控制系统，能够实时监测和调整焊接参数，提高了生产过程的自动化程度和生产效率，降低了人为操作的误差风险

Intelligent control system, capable of real-time monitoring and adjusting welding parameters, enhances the level of automation and production efficiency, reducing the risk of human error in operations



多轴平台激光自动焊机/眼镜框架焊接专机

Multi-axis platform laser automatic welding machine / Special machine for welding eyeglass frames

MT-ZDSB57

功率/配置/其他参数（均非标定制）



*以实物为准 Subject to the real object *更多详情官网 www.mtslaser.com

机型 Model	MT-ZDSB57
激光功率 (W) Laser power	1500 2000 3000 4000 6000 8000
激光波长 (nm) Laser wavelength	1080±5
功率可调范围 (%) Power regulation range	10~100%
光纤芯径 (μm) Fiber core diameter	20μm 50μm 100μm (视应用要求选配) As per application requirements
冷却方式 Cooling mode	水冷 water-cooling
工作模式 Working mode	连续或调试 Continuous or commissioning
工作温度 (°C) Operation temperature	10°C~35°C
电力需求 Power demand	220V/380V
焊接定位 Welding positioning	红光CCD Red light CCD

针对眼镜框架这种精密件的特性，激光焊接技术能够提供高精度的焊接，确保每一处焊接点的质量和稳定性，满足高标准品质要求；

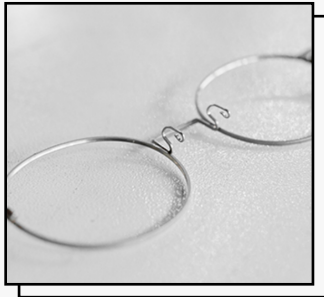
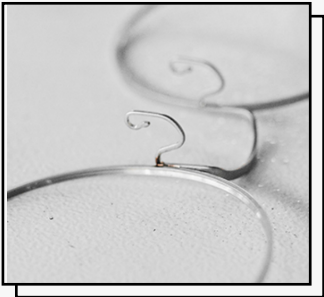
For precision components like eyeglass frames, laser welding technology delivers high-precision welding, ensuring the quality and stability of every weld point, meeting stringent quality standards;

24小时不间断的焊接能力，保证生产效率的最大化，确保生产线的持续运转；

24-hour uninterrupted welding capability ensures maximum production efficiency and continuous operation of the production line;

电脑编程控制，实现多重工序的焊接需求，满足不同眼镜框架的个性化要求；

Computer programming control, realizing multi-process welding requirements, meeting the personalized needs of different eyeglass frames;



多轴平台激光自动焊机/定子焊接专机

Multi-axis platform laser automatic welding machine / stator welding special machine

MT-ZDSB52

功率/配置/其他参数 (均非标定制)

*以实物为准 Subject to the real object *更多详情官网 www.mtislaser.com



机型 Model	MT-ZDSB52
激光功率 (W) Laser power	1500 2000 3000 4000 6000 8000
激光波长 (nm) Laser wavelength	1080±5
功率可调范围 (%) Power regulation range	10~100%
光纤芯径 (μm) Fiber core diameter	20μm 50μm 100μm (视应用要求选配) As per application requirements
冷却方式 Cooling mode	水冷 water-cooling
工作模式 Working mode	连续或调试 Continuous or commissioning
工作温度 (°C) Operation temperature	10°C~35°C
电力需求 Power demand	220V/380V
焊接定位 Welding positioning	红光CCD Red light CCD

此设备专为新能源汽车电机定子的自动化焊接而设计，完美契合行业需求；

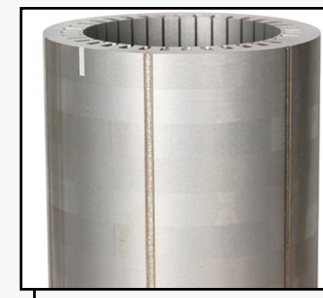
This equipment is specially designed for the automated welding of stators for new energy vehicle motors, perfectly meeting industry demands;

激光焊接技术确保焊缝清晰美观，适用于焊接精密件，提供高精度的焊接质量，为新能源动力电机的生产提供可靠保障；

Laser welding technology ensures clear and aesthetically pleasing weld seams, suitable for welding precision components, providing high-precision welding quality, and offering reliable assurance for the production of new energy power motors;

采用激光技术进行焊接，避免了传统焊接中可能出现的接触损伤和变形问题，确保焊接质量稳定；

Using laser technology for welding, it avoids potential contact damage and deformation issues commonly encountered in traditional welding, ensuring stable welding quality;



多轴平台激光自动焊机/卫浴管焊接专机

Multi-axis platform laser automatic welding machine/special machine for bathroom tube welding

MT-ZDSB05

功率/配置/其他参数（均非标定制）

*以实物为准 Subject to the real object *更多详情官网 www.mtslaser.com

机型 Model	MT-ZDSB05
激光功率 (W) Laser power	1500 2000 3000 4000 6000 8000
激光波长 (nm) Laser wavelength	1080±5
功率可调范围 (%) Power regulation range	10~100%
光纤芯径 (μm) Fiber core diameter	20μm 50μm 100μm (视应用要求选配) As per application requirements
冷却方式 Cooling mode	水冷 water-cooling
工作模式 Working mode	连续或调试 Continuous or commissioning
工作温度 (°C) Operation temperature	10°C~35°C
电力需求 Power demand	220V/380V
焊接定位 Welding positioning	红光CCD Red light CCD

凭借先进的工艺和精密的控制
系统，能够轻松应对卫浴管复
杂角度的焊接需求，确保焊接
质量和稳定性；

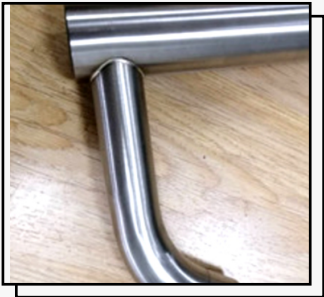
With advanced technology and precise
control systems, it can easily meet the
welding demands of complex angles in
sanitary pipes, ensuring welding
quality and stability;

轻松换型，适用性广泛，设备
设计灵活，可轻松进行换型，
适用于不同规格和尺寸的卫浴
管焊接，提高了设备的适用性
和灵活性；

Easily adaptable with wide applicability,
the equipment features flexible design
allowing effortless switching between
different specifications and sizes of
bathroom pipes for welding, enhancing
its versatility and flexibility;

焊缝美观牢固，无需后期打
磨：激光焊接技术确保焊缝质
量高度美观且牢固，减少了后
期加工的需求，提高了生产效
率；

Finely crafted and robust weld seams,
requiring no post-weld polishing: Laser
welding technology ensures highly
aesthetic and durable weld seam
quality, reducing the need for
post-weld processing and enhancing
production efficiency;



双工位/平台激光焊机/梅花手柄焊接专机

Dual-station/Platform Laser Welding Machine/Plum Blossom Handle Welding Special Machine

MT-ZDSB16
功率/配置/其他参数 (均非标定制)



*以实物为准 Subject to the real object *更多详情官网 www.mtislaser.com

机型 Model	MT-ZDSB16
激光功率 (W) Laser power	1500 2000 3000 4000 6000 8000
激光波长 (nm) Laser wavelength	1080±5
功率可调范围 (%) Power regulation range	10~100%
光纤芯径 (μm) Fiber core diameter	20μm 50μm 100μm (视应用要求选配) As per application requirements
冷却方式 Cooling mode	水冷 water-cooling
工作模式 Working mode	连续或调试 Continuous or commissioning
工作温度 (°C) Operation temperature	10°C~35°C
电力需求 Power demand	220V/380V
焊接定位 Welding positioning	红光CCD Red light CCD

专注于梅花手柄自动化焊接需求，确保完美适配，提高生产效率；

Focusing on automated welding requirements for plum blossom handles, ensuring perfect fit and increasing production efficiency;

24小时不间断工作，持续稳定的生产能力，确保生产线的持续运转，最大限度提高产能；

24-hour uninterrupted work, sustained production capacity, ensuring continuous operation of production lines, maximizing productivity;

双工位布局，实现一边放件、一边焊接，持续工作，提高工作饱和度，最大程度节约时间成本；

Dual workstation layout, enabling concurrent placement and welding operations, ensuring continuous workflow, enhancing work saturation, and maximizing time cost efficiency;



双工位/平台激光焊机/门把手焊接专机

Dual-station/platform laser welding machine/door handle welding special machine

MT-ZDSB21

功率/配置/其他参数（均非标定制）

*以实物为准 Subject to the real object *更多详情官网 www.mtslaser.com

机型 Model	MT-ZDSB21
激光功率 (W) Laser power	1500 2000 3000 4000 6000 8000
激光波长 (nm) Laser wavelength	1080±5
功率可调范围 (%) Power regulation range	10~100%
光纤芯径 (μm) Fiber core diameter	20μm 50μm 100μm (视应用要求选配) As per application requirements
冷却方式 Cooling mode	水冷 water-cooling
工作模式 Working mode	连续或调试 Continuous or commissioning
工作温度 (°C) Operation temperature	10°C~35°C
电力需求 Power demand	220V/380V
焊接定位 Welding positioning	红光CCD Red light CCD



采用双工位设计，可同时进行放置和焊接操作，确保工作效率百分之百；

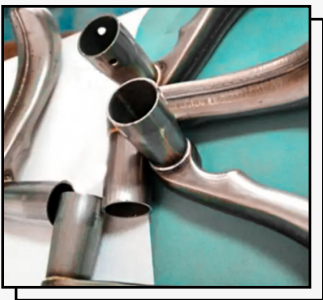
Dual-station design allows simultaneous placement and soldering operations, ensuring one hundred percent work efficiency;

采用伺服电机控制系统，可以灵活调节焊接轨迹，满足不同焊接需求；

Utilizing a servo motor control system enables flexible adjustment of welding trajectories to meet various welding requirements;

用于门把手的自动化激光焊接，满足其特殊需求，根据具体需求定制焊接工艺，增强了灵活性和适用性；

An automated laser welding system tailored for door handles, meeting their specific requirements, customizing welding processes accordingly, enhancing flexibility and applicability;



多轴平台激光自动焊机/浮球阀焊接专机

Multi-axis platform laser automatic welding machine / Floating ball valve welding special machine

MT-ZDSB29
功率/配置/其他参数 (均非标定制)



*以实物为准 Subject to the real object *更多详情官网 www.mtislaser.com

机型 Model	MT-ZDSB29
激光功率 (W) Laser power	1500 2000 3000 4000 6000 8000
激光波长 (nm) Laser wavelength	1080±5
功率可调范围 (%) Power regulation range	10~100%
光纤芯径 (μm) Fiber core diameter	20μm 50μm 100μm (视应用要求选配) As per application requirements
冷却方式 Cooling mode	水冷 water-cooling
工作模式 Working mode	连续或调试 Continuous or commissioning
工作温度 (°C) Operation temperature	10°C~35°C
电力需求 Power demand	220V/380V
焊接定位 Welding positioning	红光CCD Red light CCD

高精度工装夹具，确保产品焊接时不发生偏移，保持焊接精度不偏离；

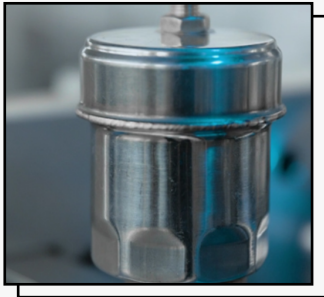
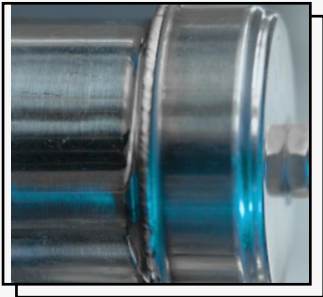
High-precision fixture ensures that the product does not shift during welding, maintaining welding accuracy without deviation;

激光焊接技术能够精准聚焦能量，使焊接过程中的能量利用率更高，从而降低能源消耗，节约生产成本；

Laser welding technology can precisely focus energy, increasing the energy utilization rate during the welding process, thereby reducing energy consumption and saving production costs;

与传统焊接方法相比，激光焊接不产生有害气体和废渣，符合环保要求，有利于企业可持续发展和社会责任；

Compared to traditional welding methods, laser welding does not produce harmful gases and waste residue, which complies with environmental requirements, benefiting sustainable development and corporate social responsibility;



多轴平台激光自动焊机/除虫花洒焊接专机

Multi-axis platform laser automatic welding machine / insect-repelling shower head welding special machine

MT-ZDSB37

功率/配置/其他参数（均非标定制）

*以实物为准 Subject to the real object *更多详情官网 www.mtslaser.com



机型 Model	MT-ZDSB37
激光功率 (W) Laser power	1500 2000 3000 4000 6000 8000
激光波长 (nm) Laser wavelength	1080±5
功率可调范围 (%) Power regulation range	10~100%
光纤芯径 (μm) Fiber core diameter	20μm 50μm 100μm (视应用要求选配) As per application requirements
冷却方式 Cooling mode	水冷 water-cooling
工作模式 Working mode	连续或调试 Continuous or commissioning
工作温度 (°C) Operation temperature	10°C~35°C
电力需求 Power demand	220V/380V
焊接定位 Welding positioning	红光CCD Red light CCD

利用先进的非接触式激光焊接技术，实现对喷雾杆/喷雾花洒复杂角度的轻松焊接，保证焊接效果的完美与一致性；

Utilizing advanced non-contact laser welding technology to achieve effortless welding of complex angles of spray rods/sprinklers, ensuring perfect and consistent welding results;

高精度旋转轴设计，确保焊接过程中的每一步旋转动作都能达到卓越的精准度。这种精度超越了传统机械手焊接的能力，为焊接作业提供了更高水平的保障；

The high-precision rotary axis design ensures exceptional accuracy for each rotation during welding, surpassing the capabilities of traditional robotic welding and providing heightened assurance for welding tasks;

二十四小时连续工作的能力，确保生产线的持续运转，提高生产效率和产能；

The ability to work continuously for twenty-four hours, ensuring the continuous operation of the production line, and enhancing production efficiency and capacity;



多轴平台激光自动焊机/门把手焊接专机

Multi-axis platform laser automatic welding machine / specialized machine for welding door handles

MT-ZDSB02
功率/配置/其他参数 (均非标定制)



*以实物为准 Subject to the real object *更多详情官网 www.mtislaser.com

机型 Model	MT-ZDSB02
激光功率 (W) Laser power	1500 2000 3000 4000 6000 8000
激光波长 (nm) Laser wavelength	1080±5
功率可调范围 (%) Power regulation range	10~100%
光纤芯径 (μm) Fiber core diameter	20μm 50μm 100μm (视应用要求选配) As per application requirements
冷却方式 Cooling mode	水冷 water-cooling
工作模式 Working mode	连续或调试 Continuous or commissioning
工作温度 (°C) Operation temperature	10°C~35°C
电力需求 Power demand	220V/380V
焊接定位 Welding positioning	红光CCD Red light CCD

针对门把手的45度角度拼接焊接，实现自动化处理，确保焊接角度和质量的一致性；

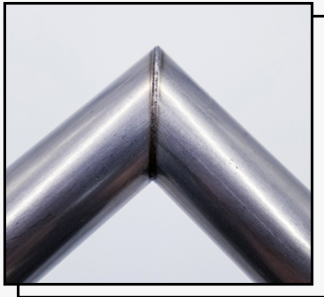
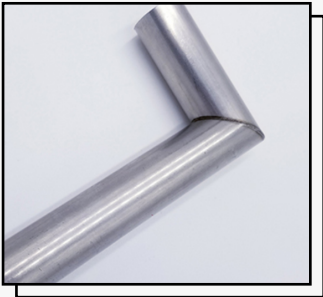
For the 45-degree angle joint welding of door handles, automated processing is implemented to ensure consistency in welding angles and quality;

焊接过程中形成的焊缝清晰美观，牢固耐用，无需后期打磨，节约时间和人力成本；

The weld seam formed during the welding process is clear, aesthetically pleasing, sturdy, and durable, requiring no post-weld grinding, thus saving time and labor costs;

精密工装夹具，确保产品焊接不偏移，精度不偏离，从而保证焊接质量和稳定性；

Precision tooling fixtures ensure that product welding does not deviate, maintaining accuracy and stability, thereby guaranteeing welding quality;



多轴平台激光自动焊机/汽配轴承焊接专机

Multi-axis platform laser automatic welding machine/ Special machine for automotive bearing welding

MT-ZDSB07

功率/配置/其他参数（均非标定制）

*以实物为准 Subject to the real object *更多详情官网 www.mtislaser.com

机型 Model	MT-ZDSB07
激光功率 (W) Laser power	1500 2000 3000 4000 6000 8000
激光波长 (nm) Laser wavelength	1080±5
功率可调范围 (%) Power regulation range	10~100%
光纤芯径 (μm) Fiber core diameter	20μm 50μm 100μm (视应用要求选配) As per application requirements
冷却方式 Cooling mode	水冷 water-cooling
工作模式 Working mode	连续或调试 Continuous or commissioning
工作温度 (°C) Operation temperature	10°C~35°C
电力需求 Power demand	220V/380V
焊接定位 Welding positioning	红光CCD Red light CCD



专为汽配轴承打造的工装夹具
确保焊接过程中产品不发生偏
移，精准度高，产品质量可
靠；

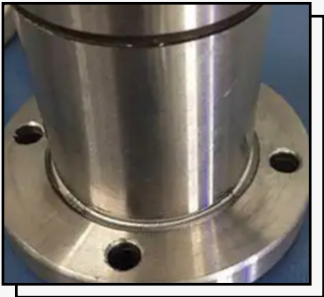
Specially designed fixture for
automotive bearing ensures no
deviation during welding process,
ensuring high precision and reliable
product quality;

激光技术实现了非接触式焊
接，轻松处理复杂角度，保证
焊接质量和稳定性；

Laser technology enables non-contact
welding, effortlessly handling complex
angles, ensuring welding quality and
stability;

设备可轻松应对汽配轴承不同
尺寸和规格的焊接需求，灵活
性高，适用性强；

The equipment can easily adapt to the
welding needs of different sizes and
specifications of automotive bearings,
with high flexibility and strong
applicability;



多轴平台激光自动焊机/丁字杆焊接专机

Multi-axis platform laser automatic welding machine / T-bar welding special machine

MT-ZDSB08
功率/配置/其他参数 (均非标定制)



*以实物为准 Subject to the real object *更多详情官网 www.mtislaser.com

机型 Model	MT-ZDSB08
激光功率 (W) Laser power	1500 2000 3000 4000 6000 8000
激光波长 (nm) Laser wavelength	1080±5
功率可调范围 (%) Power regulation range	10~100%
光纤芯径 (μm) Fiber core diameter	20μm 50μm 100μm (视应用要求选配) As per application requirements
冷却方式 Cooling mode	水冷 water-cooling
工作模式 Working mode	连续或调试 Continuous or commissioning
工作温度 (°C) Operation temperature	10°C~35°C
电力需求 Power demand	220V/380V
焊接定位 Welding positioning	红光CCD Red light CCD

这套设备专为丁字杆设计，确保产品在焊接过程中不发生偏移，实现焊接精度零偏离；

This equipment is specifically designed for T-bars, ensuring zero deviation in welding accuracy during the welding process;

灵活调节焊接轨迹，满足不同丁字杆尺寸和规格的需求，实现个性化定制焊接；

Flexibly adjust welding trajectories to meet the needs of different sizes and specifications of crossbars, achieving personalized custom welding;

支持定制多重工序焊接，满足复杂生产需求，提升生产线效率；

Supports customizable multi-process welding to meet complex production needs and enhance production line efficiency;



多轴平台激光自动焊机/管件封口焊接专机

Multi-axis platform laser automatic welding machine / Specialized machine for pipe end welding

MT-ZDSB09

功率/配置/其他参数（均非标定制）



*以实物为准 Subject to the real object *更多详情官网 www.mtislaser.com

机型 Model	MT-ZDSB09
激光功率 (W) Laser power	1500 2000 3000 4000 6000 8000
激光波长 (nm) Laser wavelength	1080±5
功率可调范围 (%) Power regulation range	10~100%
光纤芯径 (μm) Fiber core diameter	20μm 50μm 100μm (视应用要求选配) As per application requirements
冷却方式 Cooling mode	水冷 water-cooling
工作模式 Working mode	连续或调试 Continuous or commissioning
工作温度 (°C) Operation temperature	10°C~35°C
电力需求 Power demand	220V/380V
焊接定位 Welding positioning	红光CCD Red light CCD

能够轻松换管件焊接，适用于不同管件直径、尺寸和规格的焊接，灵活应对生产需求变化；

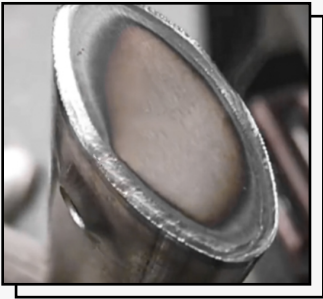
Capable of easily switching between pipe fittings for welding, suitable for welding different diameters, sizes, and specifications of fittings, flexibly adapting to changes in production demands;

采用非接触式激光焊接技术，轻松应对复杂角度，无需调整焊接姿态，实现高效稳定的焊接；

Utilizing non-contact laser welding technology, effortlessly accommodating complex angles, without the need to adjust welding positions, achieving efficient and stable welding;

针对管件封口的激光自动化焊接设计，刁钻内壁角度轻松焊接，确保焊接效果完美无缺；

Designed for automated laser welding of pipe fittings, easily tackles intricate inner wall angles to ensure flawless welding results;



多轴平台激光自动焊机/菜盆管焊接专机

Multi-axis platform laser automatic welding machine / Special machine for sink tube welding

MT-ZDSB10
功率/配置/其他参数 (均非标定制)



*以实物为准 Subject to the real object *更多详情官网 www.mtislaser.com

机型 Model	MT-ZDSB10
激光功率 (W) Laser power	1500 2000 3000 4000 6000 8000
激光波长 (nm) Laser wavelength	1080±5
功率可调范围 (%) Power regulation range	10~100%
光纤芯径 (μm) Fiber core diameter	20μm 50μm 100μm (视应用要求选配) As per application requirements
冷却方式 Cooling mode	水冷 water-cooling
工作模式 Working mode	连续或调试 Continuous or commissioning
工作温度 (°C) Operation temperature	10°C~35°C
电力需求 Power demand	220V/380V
焊接定位 Welding positioning	红光CCD Red light CCD

设备是专门为菜盆管而设计，充分满足其自动化焊接需求，确保焊接质量和效率；

The equipment is specifically designed for the sink pipe, fully meeting its automated welding requirements, ensuring welding quality and efficiency;

设备配备高精密度工装夹具，确保产品焊接不偏移，精度不偏离，保证焊接质量和稳定性；

The equipment is equipped with high-precision tooling fixtures to ensure that the product welding does not deviate and the accuracy remains unchanged, guaranteeing welding quality and stability;

利用伺服电机实现任意焊接轨迹的调节，适应不同产品形状和尺寸的焊接需求；

Utilizing servo motors to achieve adjustable welding trajectories, accommodating various product shapes and sizes for welding requirements;



多轴平台激光自动焊机/拉手杆焊接专机

Multi-axis platform laser automatic welding machine / dedicated machine for handlebar welding

MT-ZDSB11

功率/配置/其他参数（均非标定制）

*以实物为准 Subject to the real object *更多详情官网 www.mtslaser.com



机型 Model	MT-ZDSB11
激光功率 (W) Laser power	1500 2000 3000 4000 6000 8000
激光波长 (nm) Laser wavelength	1080±5
功率可调范围 (%) Power regulation range	10~100%
光纤芯径 (μm) Fiber core diameter	20μm 50μm 100μm (视应用要求选配) As per application requirements
冷却方式 Cooling mode	水冷 water-cooling
工作模式 Working mode	连续或调试 Continuous or commissioning
工作温度 (°C) Operation temperature	10°C~35°C
电力需求 Power demand	220V/380V
焊接定位 Welding positioning	红光CCD Red light CCD

可轻松换型，适应不同直径、尺寸和规格的焊接，灵活应对各类订单需求；

Easily interchangeable, suitable for welding different diameters, sizes, and specifications, flexibly meeting various order requirements;

激光焊接技术实现非接触式焊接，适用于各种复杂角度，轻松应对各类焊接需求；

Laser welding technology achieves non-contact welding, suitable for various complex angles, easily adapting to all kinds of welding requirements;

搭载伺服电机，可根据需要随意调节焊接轨迹，适应拉手杆不同形状和尺寸的拉手杆焊接；

Equipped with servo motors, allowing for flexible adjustment of welding trajectory to accommodate various shapes and sizes of door handles for welding;



多轴平台激光自动焊机/蒸发器焊接专机

Multi-axis platform laser automatic welding machine/evaporator welding special machine

MT-ZDSB12
功率/配置/其他参数 (均非标定制)



*以实物为准 Subject to the real object *更多详情官网 www.mtislaser.com

机型 Model	MT-ZDSB12
激光功率 (W) Laser power	1500 2000 3000 4000 6000 8000
激光波长 (nm) Laser wavelength	1080±5
功率可调范围 (%) Power regulation range	10~100%
光纤芯径 (μm) Fiber core diameter	20μm 50μm 100μm (视应用要求选配) As per application requirements
冷却方式 Cooling mode	水冷 water-cooling
工作模式 Working mode	连续或调试 Continuous or commissioning
工作温度 (°C) Operation temperature	10°C~35°C
电力需求 Power demand	220V/380V
焊接定位 Welding positioning	红光CCD Red light CCD

精心设计的自动焊接机器，专为蒸发器和制冷配件的自动化激光焊接而打造，完美贴合产品需求；

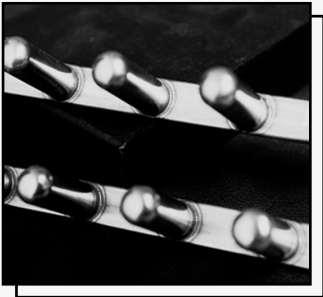
A meticulously designed automated welding machine, tailor-made for the automated laser welding of evaporators and refrigeration components, perfectly aligned with product requirements;

通过垂直旋转轴的应用，实现了焊接过程中对于不同角度和方向的需求的快速适配，提高了生产效率和焊接精度；

By applying a vertical rotating axis, rapid adaptation to various angles and orientations during the welding process has been achieved, enhancing both production efficiency and welding accuracy;

支持多重工序焊接，可根据产品要求进行定制化设计，满足不同生产需求；

Supports multi-step welding processes, can be customized according to product requirements to meet different production needs;



多轴平台激光自动焊机/门窗框架焊接专机

Multi-axis platform laser automatic welding machine / Special machine for welding door and window frames

MT-ZDSB13

功率/配置/其他参数（均非标定制）

*以实物为准 Subject to the real object *更多详情官网 www.mtslaser.com

机型 Model	MT-ZDSB13
激光功率 (W) Laser power	1500 2000 3000 4000 6000 8000
激光波长 (nm) Laser wavelength	1080±5
功率可调范围 (%) Power regulation range	10~100%
光纤芯径 (μm) Fiber core diameter	20μm 50μm 100μm (视应用要求选配) As per application requirements
冷却方式 Cooling mode	水冷 water-cooling
工作模式 Working mode	连续或调试 Continuous or commissioning
工作温度 (°C) Operation temperature	10°C~35°C
电力需求 Power demand	220V/380V
焊接定位 Welding positioning	红光CCD Red light CCD



专为门窗框架设计，确保产品焊接精度高，不发生偏移，不偏离要求的精度标准；

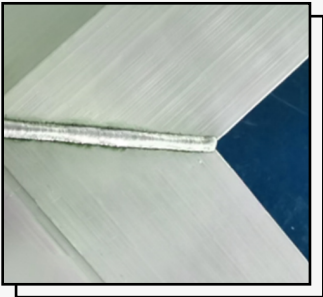
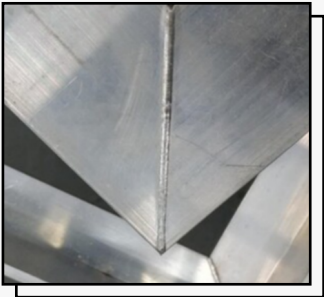
Specifically designed for door and window frames, ensuring high welding precision without deviation from required accuracy standards;

设备具备全天候工作能力，保障生产线的连续性和稳定性，提高生产效率；

The equipment is equipped with the ability to work around the clock, ensuring the continuity and stability of the production line, and improving production efficiency;

需要定制多种焊接工序，满足复杂门窗框架的焊接要求，提升生产线的灵活性和适应性；

Need to customize multiple welding processes to meet the complex welding requirements of door and window frames, enhancing the flexibility and adaptability of the production line;



多轴平台激光自动焊机/压力表焊接专机

Multi-axis platform laser automatic welding machine / Special machine for pressure gauge welding

MT-ZDSB15
功率/配置/其他参数 (均非标定制)

*以实物为准 Subject to the real object *更多详情官网 www.mtislaser.com



机型 Model	MT-ZDSB15
激光功率 (W) Laser power	1500 2000 3000 4000 6000 8000
激光波长 (nm) Laser wavelength	1080±5
功率可调范围 (%) Power regulation range	10~100%
光纤芯径 (μm) Fiber core diameter	20μm 50μm 100μm (视应用要求选配) As per application requirements
冷却方式 Cooling mode	水冷 water-cooling
工作模式 Working mode	连续或调试 Continuous or commissioning
工作温度 (°C) Operation temperature	10°C~35°C
电力需求 Power demand	220V/380V
焊接定位 Welding positioning	红光CCD Red light CCD

独特的工装夹具保证产品在焊接过程中不会发生偏移，确保焊接精度高度准确，产品质量稳定可靠；

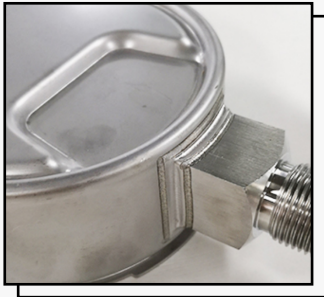
The unique fixture ensures that the product will not deviate during the welding process, ensuring high precision and accuracy in welding, and ensuring stable and reliable product quality;

专为压力表的自动化焊接而设计，完美融合了先进技术和专业需求，确保焊接质量和效率的无缝匹配；

Designed specifically for the automated welding of pressure gauges, seamlessly integrating advanced technology with professional requirements, ensuring a seamless match between welding quality and efficiency;

高度灵活的伺服电机系统，可根据需求调节焊接轨迹，适应不同规格和尺寸的压力表焊接需求；

Highly flexible servo motor system, capable of adjusting welding trajectories according to requirements, catering to the welding needs of pressure gauges of different specifications and sizes;



多轴平台激光自动焊机/阀芯焊接专机

Multi-axis platform laser automatic welding machine/Valve core welding special machine

MT-ZDSB19

功率/配置/其他参数（均非标定制）

*以实物为准 Subject to the real object *更多详情官网 www.mtslaser.com



机型 Model	MT-ZDSB19
激光功率 (W) Laser power	1500 2000 3000 4000 6000 8000
激光波长 (nm) Laser wavelength	1080±5
功率可调范围 (%) Power regulation range	10~100%
光纤芯径 (μm) Fiber core diameter	20μm 50μm 100μm (视应用要求选配) As per application requirements
冷却方式 Cooling mode	水冷 water-cooling
工作模式 Working mode	连续或调试 Continuous or commissioning
工作温度 (°C) Operation temperature	10°C~35°C
电力需求 Power demand	220V/380V
焊接定位 Welding positioning	红光CCD Red light CCD

焊接过程中形成的焊缝清晰美观，牢固可靠，无需额外的后期打磨处理，节约了时间和成本；

During the welding process, the formed weld seam is clear, aesthetically pleasing, sturdy, and reliable, eliminating the need for additional post-weld grinding, saving time and costs;

PC机电脑编程控制焊接轨迹，操作简便，易于进行换型和调整，提高了设备的灵活性和适用性；

Controlled by professional PC computer programming, the welding trajectory is easily adjustable, enhancing the equipment's flexibility and versatility;

专门设计用于阀芯的自动化焊接，旨在满足阀芯焊接的高要求和复杂性；

Specifically designed for automated welding of valve cores, aimed at meeting the high demands and complexities of valve core welding;



双工位/平台激光焊机/钮珠锅盖/珠盖焊接专机

Dual station/laser welding machine/knob cover/cap welding special machine

MT-ZDSB20
功率/配置/其他参数 (均非标定制)

*以实物为准 Subject to the real object *更多详情官网 www.mtislaser.com



机型 Model	MT-ZDSB20
激光功率 (W) Laser power	1500 2000 3000 4000 6000 8000
激光波长 (nm) Laser wavelength	1080±5
功率可调范围 (%) Power regulation range	10~100%
光纤芯径 (μm) Fiber core diameter	20μm 50μm 100μm (视应用要求选配) As per application requirements
冷却方式 Cooling mode	水冷 water-cooling
工作模式 Working mode	连续或调试 Continuous or commissioning
工作温度 (°C) Operation temperature	10°C~35°C
电力需求 Power demand	220V/380V
焊接定位 Welding positioning	红光CCD Red light CCD

这款激光自动焊接机设备专为珠盖的自动化焊接而设计，完美契合产品需求，提供卓越的焊接解决方案；

This laser automatic welding machine is specially designed for the automated welding of pearl caps, perfectly matching the product requirements and providing excellent welding solutions;

采用模块化设计，可根据生产需求灵活组合和配置，满足不同钮珠锅盖焊接工艺的要求，提高了设备的适用性和灵活性；

Utilizing modular design, it allows flexible combination and configuration according to production needs, meeting the requirements of various button cover welding processes, thus enhancing the versatility and flexibility of the equipment;

双工位设计，一边焊接一边放件，确保工件焊接饱和度百分之百，最大限度地提高生产效率和产能利用率；

Dual workstation design, with one side for welding and the other for loading/unloading parts, ensuring 100% saturation of welding tasks and maximizing production efficiency and capacity utilization;



多轴平台激光自动焊机/毛巾架/卫浴架焊接专机

Multi-axis platform laser automatic welding machine/towel rack/bathroom rack welding special machine

MT-ZDSB27

功率/配置/其他参数（均非标定制）

*以实物为准 Subject to the real object *更多详情官网 www.mtslaser.com

机型 Model	MT-ZDSB27
激光功率 (W) Laser power	1500 2000 3000 4000 6000 8000
激光波长 (nm) Laser wavelength	1080±5
功率可调范围 (%) Power regulation range	10~100%
光纤芯径 (μm) Fiber core diameter	20μm 50μm 100μm (视应用要求选配) As per application requirements
冷却方式 Cooling mode	水冷 water-cooling
工作模式 Working mode	连续或调试 Continuous or commissioning
工作温度 (°C) Operation temperature	10°C~35°C
电力需求 Power demand	220V/380V
焊接定位 Welding positioning	红光CCD Red light CCD



高精密工装夹具确保焊接精度无偏差，毛巾架产品焊接精度稳定可靠，不会偏离设计要求；

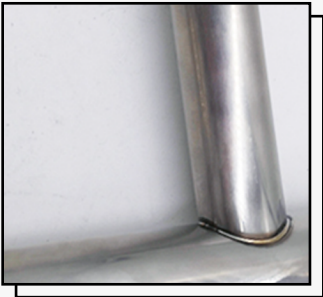
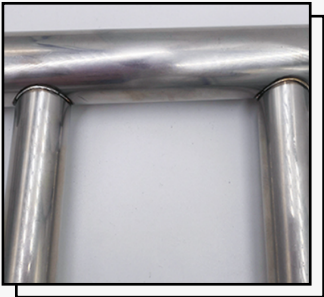
High-precision fixture ensures welding accuracy without deviation, ensuring stable and reliable welding accuracy for towel rack products, in line with design requirements;

焊缝美观牢固，无需后期打磨处理，节省生产时间和成本，提升生产效率；

The weld seam is aesthetically pleasing and robust, requiring no post-welding polishing, saving production time and costs, and enhancing production efficiency;

多种直径、尺寸和规格的毛巾架焊接，焊缝清晰美观，确保产品质量一致性，增强品牌形象和市场竞争力；

Multiple diameters, sizes, and specifications of towel racks are welded, ensuring clear and aesthetic weld seams, ensuring product quality consistency, enhancing brand image, and market competitiveness;



双工位/激光焊机/转子飞轮/水泵电机焊接专机

Double-station/laser welding machine/rotor flywheel/pump motor welding special machine

MT-ZDSB22
功率/配置/其他参数 (均非标定制)

*以实物为准 Subject to the real object *更多详情官网 www.mtislaser.com



机型 Model	MT-ZDSB22
激光功率 (W) Laser power	1500 2000 3000 4000 6000 8000
激光波长 (nm) Laser wavelength	1080±5
功率可调范围 (%) Power regulation range	10~100%
光纤芯径 (μm) Fiber core diameter	20μm 50μm 100μm (视应用要求选配) As per application requirements
冷却方式 Cooling mode	水冷 water-cooling
工作模式 Working mode	连续或调试 Continuous or commissioning
工作温度 (°C) Operation temperature	10°C~35°C
电力需求 Power demand	220V/380V
焊接定位 Welding positioning	红光CCD Red light CCD

确保产品在焊接过程中保持位置稳定，避免偏移和精度损失，特别针对转子飞轮设计，保证焊接质量；

Ensure product stability during welding process, preventing deviation and precision loss, especially designed for rotor flywheel, guaranteeing welding quality;

激光焊接技术确保焊缝的外观美观，无需后期打磨，同时焊接牢固，提高产品质量和外观；

The laser welding technology ensures a neat appearance of the weld seam, eliminating the need for post-weld grinding, while ensuring strong and durable welds, thus enhancing both product quality and aesthetics;

灵活适应不同直径、尺寸和规格的转子飞轮焊接需求，确保焊接质量和一致性，提高生产效率和灵活性；

Flexibly adapt to the welding requirements of rotors and flywheels of different diameters, sizes, and specifications, ensuring welding quality and consistency, improving production efficiency and flexibility;



多轴平台激光自动焊机/液体浮球焊接专机

Multi-axis platform laser automatic welding machine/liquid float ball welding special machine

MT-ZDSB25

功率/配置/其他参数（均非标定制）

*以实物为准 Subject to the real object *更多详情官网 www.mtslaser.com

机型 Model	MT-ZDSB25
激光功率 (W) Laser power	1500 2000 3000 4000 6000 8000
激光波长 (nm) Laser wavelength	1080±5
功率可调范围 (%) Power regulation range	10~100%
光纤芯径 (μm) Fiber core diameter	20μm 50μm 100μm (视应用要求选配) As per application requirements
冷却方式 Cooling mode	水冷 water-cooling
工作模式 Working mode	连续或调试 Continuous or commissioning
工作温度 (°C) Operation temperature	10°C~35°C
电力需求 Power demand	220V/380V
焊接定位 Welding positioning	红光CCD Red light CCD



液体浮球的焊接常伴难度，容易发生偏移和变形。然而，我们的设备配备了高精度工装夹具，能够精准定位浮球，有效应对其特殊形态，确保焊接过程中的稳定性和准确性；

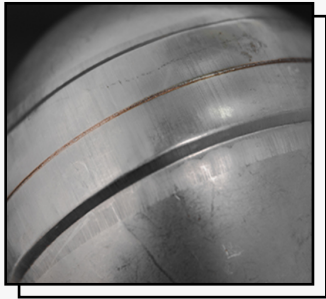
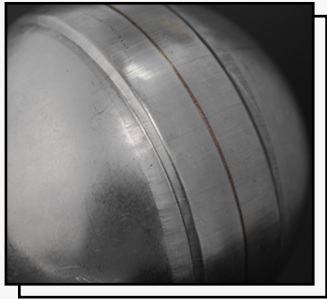
Utilizing advanced non-contact laser welding technology to achieve effortless welding of complex angles of spray rods/sprinklers, ensuring perfect and consistent welding results;

24小时不间断工作，确保生产效率 and 连续性，满足焊接生产需求；

The high-precision rotary axis design ensures exceptional accuracy for each rotation during welding, surpassing the capabilities of traditional robotic welding and providing heightened assurance for welding tasks;

支持定制化的多重工序焊接，灵活应对不同浮球规格需求，提高生产多样性和灵活性；

The ability to work continuously for twenty-four hours, ensuring the continuous operation of the production line, and enhancing production efficiency and capacity;



多轴平台激光自动焊机/气囊杆焊接专机

Multi-axis platform laser automatic welding machine / Airbag rod welding special machine

MT-ZDSB26
功率/配置/其他参数 (均非标定制)



*以实物为准 Subject to the real object *更多详情官网 www.mtislaser.com

机型 Model	MT-ZDSB26
激光功率 (W) Laser power	1500 2000 3000 4000 6000 8000
激光波长 (nm) Laser wavelength	1080±5
功率可调范围 (%) Power regulation range	10~100%
光纤芯径 (μm) Fiber core diameter	20μm 50μm 100μm (视应用要求选配) As per application requirements
冷却方式 Cooling mode	水冷 water-cooling
工作模式 Working mode	连续或调试 Continuous or commissioning
工作温度 (°C) Operation temperature	10°C~35°C
电力需求 Power demand	220V/380V
焊接定位 Welding positioning	红光CCD Red light CCD

设备采用环保节能设计，激光焊接技术无需额外的焊接材料，减少了对环境的污染，同时节约了能源和资源；

The equipment adopts environmentally friendly and energy-saving design. Laser welding technology eliminates the need for additional welding materials, reducing environmental pollution and saving energy and resources;

采用先进的控制系统，实现对焊接轨迹的精细调控，保证气囊杆焊接过程的准确性和稳定性；

Utilizing an advanced control system to achieve precise control over the welding trajectory, ensuring the accuracy and stability of the welding process for the pneumatic rods;

灵活的焊接轨迹调节功能使得焊接过程更加精准和可控，为不同尺寸和规格的气囊杆提供定制化的焊接方案；

The flexible welding trajectory adjustment function enables the welding process to be more precise and controllable, providing customized welding solutions for different sizes and specifications of pneumatic rods;



多轴平台激光自动焊机/卫浴弯管焊接专机

Multi-axis platform laser automatic welding machine/ Special machine for bathroom bend pipe welding

MT-ZDSB28
功率/配置/其他参数（均非标定制）

*以实物为准 Subject to the real object *更多详情官网 www.mtslaser.com



机型 Model	MT-ZDSB28
激光功率 (W) Laser power	1500 2000 3000 4000 6000 8000
激光波长 (nm) Laser wavelength	1080±5
功率可调范围 (%) Power regulation range	10~100%
光纤芯径 (μm) Fiber core diameter	20μm 50μm 100μm (视应用要求选配) As per application requirements
冷却方式 Cooling mode	水冷 water-cooling
工作模式 Working mode	连续或调试 Continuous or commissioning
工作温度 (°C) Operation temperature	10°C~35°C
电力需求 Power demand	220V/380V
焊接定位 Welding positioning	红光CCD Red light CCD

专为卫浴弯管设计，确保焊接过程中产品不会偏移，保持焊接精度的稳定性和一致性；

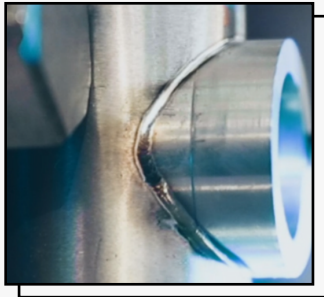
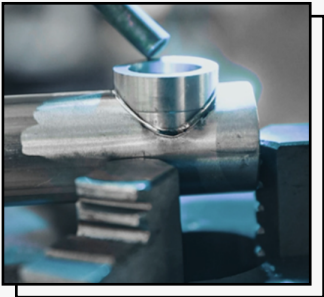
Designed specifically for bathroom bent pipes, ensuring that the product will not shift during the welding process, maintaining welding accuracy, stability, and consistency;

设备具备全天候运行能力，可以连续生产，确保生产进度的持续性和稳定性；

The equipment has the ability to operate around the clock, enabling continuous production and ensuring the continuity and stability of the production schedule;

搭载伺服电机系统，可根据不同工件的要求调节焊接轨迹，保证焊接过程的精确度和一致性；

Equipped with a servo motor system, it can adjust the welding trajectory according to the requirements of different workpieces, ensuring the accuracy and consistency of the welding process;



多轴平台激光自动焊机/压力罐焊接专机

Multi-axis platform laser automatic welding machine / Pressure vessel welding special machine

MT-ZDSB30
功率/配置/其他参数 (均非标定制)



*以实物为准 Subject to the real object *更多详情官网 www.mtislaser.com

机型 Model	MT-ZDSB30
激光功率 (W) Laser power	1500 2000 3000 4000 6000 8000
激光波长 (nm) Laser wavelength	1080±5
功率可调范围 (%) Power regulation range	10~100%
光纤芯径 (μm) Fiber core diameter	20μm 50μm 100μm (视应用要求选配) As per application requirements
冷却方式 Cooling mode	水冷 water-cooling
工作模式 Working mode	连续或调试 Continuous or commissioning
工作温度 (°C) Operation temperature	10°C~35°C
电力需求 Power demand	220V/380V
焊接定位 Welding positioning	红光CCD Red light CCD

伺服电机的任意调节使得焊接轨迹的变化得以应对，即使是最复杂的焊接任务也能轻松应对；

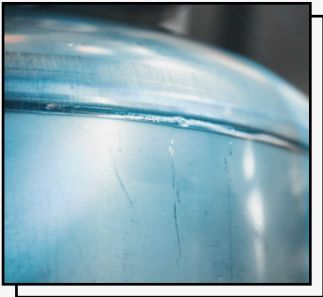
With the servo motor's arbitrary adjustment, the variation of welding trajectory can be accommodated, enabling easy handling of even the most complex welding tasks;

焊接后的焊缝清晰、美观，质量牢固，无需后期打磨，节省了压力罐后续额外的工序和成本；

With clear and aesthetically pleasing weld seams, sturdy quality, and no need for post-weld grinding, it saves pressure vessel manufacturers additional processes and costs;

高精度工装夹具确保产品焊接精度不偏移，焊接精度始终如一，为每个压力罐提供稳定可靠的焊接质量；

The high-precision tooling fixture ensures that the welding accuracy of the product remains consistent, providing stable and reliable welding quality for each pressure vessel;



多轴平台激光自动焊机/水龙头管焊接专机

Multi-axis platform laser automatic welding machine/faucet pipe welding special machine

MT-ZDSB38

功率/配置/其他参数（均非标定制）

*以实物为准 Subject to the real object *更多详情官网 www.mtslaser.com

机型 Model	MT-ZDSB38
激光功率 (W) Laser power	1500 2000 3000 4000 6000 8000
激光波长 (nm) Laser wavelength	1080±5
功率可调范围 (%) Power regulation range	10~100%
光纤芯径 (μm) Fiber core diameter	20μm 50μm 100μm (视应用要求选配) As per application requirements
冷却方式 Cooling mode	水冷 water-cooling
工作模式 Working mode	连续或调试 Continuous or commissioning
工作温度 (°C) Operation temperature	10°C~35°C
电力需求 Power demand	220V/380V
焊接定位 Welding positioning	红光CCD Red light CCD



专为水龙头管设计的高精密工装夹具确保产品在焊接过程中不会发生偏移，从而保证焊接精度不会偏离；

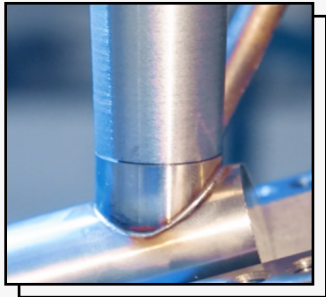
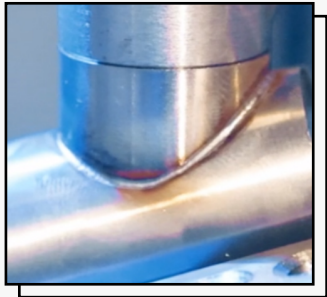
The high-precision fixture specially designed for faucet pipes ensures that there is no deviation during the welding process, thereby maintaining welding accuracy;

适用于水龙头管不同直径、尺寸和规格的焊接，确保每个产品都能达到预期的焊接标准，提高生产线的灵活性和效率；

Suitable for welding different diameters, sizes, and specifications of faucet pipes, ensuring that each product meets the expected welding standards, enhancing the flexibility and efficiency of the production line;

可根据需求定制多重工序焊接方案，满足不同产品的生产要求；

Customizable multi-step welding processes can be tailored to meet the production requirements of different products;

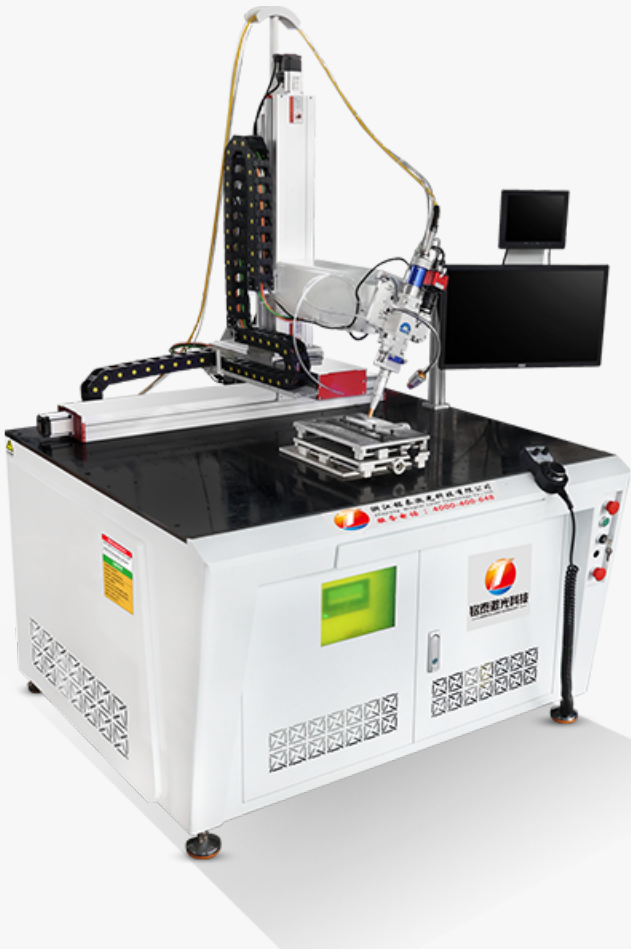


多轴平台激光自动焊机/铰链/合页焊接专机

Multi-axis platform laser automatic welding machine/hinge/hinge welding special machine

MT-ZDSB40
功率/配置/其他参数 (均非标定制)

*以实物为准 Subject to the real object *更多详情官网 www.mtislaser.com



机型 Model	MT-ZDSB40
激光功率 (W) Laser power	1500 2000 3000 4000 6000 8000
激光波长 (nm) Laser wavelength	1080±5
功率可调范围 (%) Power regulation range	10~100%
光纤芯径 (μm) Fiber core diameter	20μm 50μm 100μm (视应用要求选配) As per application requirements
冷却方式 Cooling mode	水冷 water-cooling
工作模式 Working mode	连续或调试 Continuous or commissioning
工作温度 (°C) Operation temperature	10°C~35°C
电力需求 Power demand	220V/380V
焊接定位 Welding positioning	红光CCD Red light CCD

定制化解决方案，完美契合铰链合页的自动化激光焊接需求，确保高效和质量一致性；

Customized solution, perfectly tailored to the automated laser welding needs of hinge joints, ensuring high efficiency and consistency in quality;

水箱集成在机柜内部，节省空间，简化设备结构，提高设备整体稳定性，减少维护成本；

The water tank is integrated inside the cabinet, saving space, simplifying the equipment structure, enhancing overall equipment stability, and reducing maintenance costs;

可适用于铰链合页不同直径、尺寸和规格的焊接，确保焊接的通用性和灵活性，提升设备的适用范围；

Can be used for welding hinges of different diameters, sizes, and specifications, ensuring welding versatility and flexibility, enhancing the equipment's applicability;

